

COMPUTER BASED MAPS

In this issue we present a further two maps in our series of spatially disaggregated "cross-section" economic data. In the last issue of our Commentary we discussed the usefulness of mapping techniques for presenting spatial economic features in Scotland in a visual framework.

Map 1 illustrates total housing starts per capita at local authority district level for the first quarter of 1976. It would appear that North and North-East Scotland - in particular Inverness, Sutherland, Badenoch and Strathspey, Moray, and Banff and Buchan - were experiencing a high degree of new housing construction per head relative to the rest of Scotland at this time. This provides further evidence for the view that economic activity in Scotland has been moving North and East through the influence of North Sea oil development. In other words secondary multiplier effects of oil expenditure have only had a limited effect in West Central Scotland.

Map 2 depicts domestic rate levels (in pence per £) for the local authority districts in 1975/76. It is clear that the high rate areas are mainly confined to the Central belt and city areas. In Strathclyde estimated expenditure per head \* on Education, Social Work, and Administration for 1976/77 is relatively high compared to other similar regions in Scotland, excluding the Islands. The fairly low rate levels in the Islands are mainly due to the very high rate support grants they receive. Arguments have been put forward that the average cost of a given level of infra-structure provision in terms of regional population density is a U shaped curve.\*\* To some extent this is borne out by the map. The Island areas and Strathclyde have high expenditure levels per head, but are at opposite ends of the population density range, and regions nearer the mean of this range tend to have lower per capita expenditure levels. However, as most regions reflect different levels

---

\* *Rating Review, June 1975*

\*\* One appreciates the inclusion of Argyll & Bute in regional reorganisation has lowered Strathclyde's population density considerably, however this does not detract from the basic arguments put forward, as the population of Argyll & Bute was forced to accept the Glasgow area rate levels.

of infra-structure provision, these inferences can only be highly tentative. Essentially, the Strathclyde position may imply that the higher rates reflect higher average costs through diseconomies and inefficiency. Equally one may argue that Strathclyde offers a greater variety of regional services for which the local population is prepared to pay. This does not necessarily imply higher than average costs.

Map 1  
Housing starts per thousand persons  
in first quarter of 1976



Shetland  
Islands



Key

over 1.0

0.5 - 1.0

0.1 - 0.5

0 - 0.1

Nil

Map 2 District Rate Levels for 1975/76  
(in pence per £)

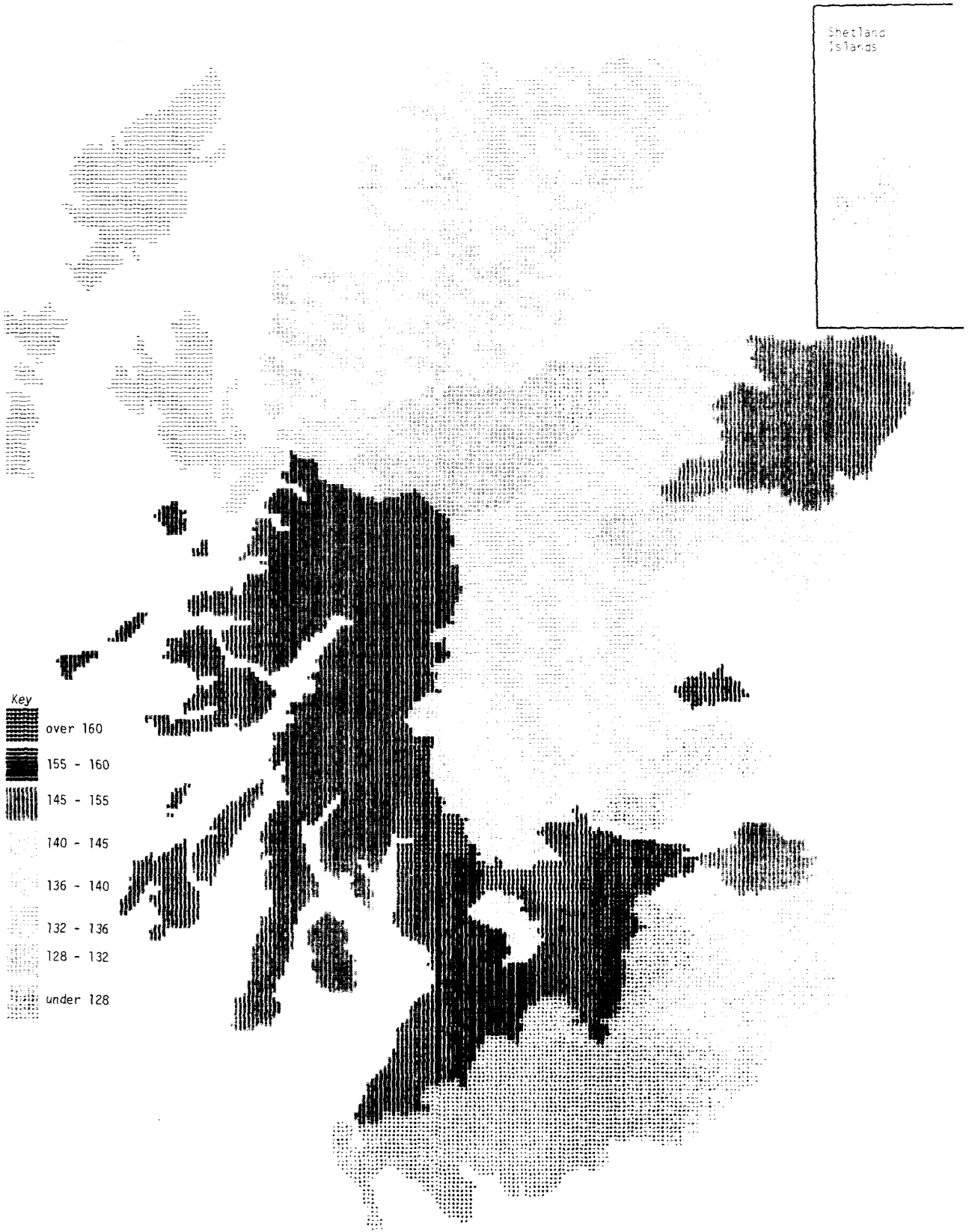


TABLE 1 Unemployment and Vacancies in the Regions of the UK September 1976

	Unemployment (Thousands)	Unemployment Rate (%)	Vacancies (Thousands)	Unemployment/ Vacancies
South East	343.5	4.6	66.4	5.2
East Anglia	34.7	5.0	4.8	7.3
South West	104.4	6.6	11.1	9.4
West Midlands	145.8	6.4	11.9	12.3
East Midlands	80.1	5.2	10.0	8.0
Yorks & Humberside	122.1	5.9	13.0	9.4
North West	211.3	7.5	14.2	14.9
North	110.1	8.2	9.7	11.3
Wales	82.5	7.9	7.0	11.8
Strathclyde	96.4	8.9	8.8	10.9
Rest of Scotland	65.0	6.0	8.1	8.1
Scotland	161.4	7.4	16.9	9.6

TABLE 2 Unemployment in the Scottish Regions

	Unemployment (Thousands)		% Change	Unemployment Rate
	June 1976	Sept 1976	June/Sept	September 1976
Highland	3.9	4.4	+15.3	6.8
Shetland	0.2	0.2	+14.0	4.0
Orkney	0.2	0.2	+39.8	4.7
Western Isles	1.1	1.0	- 8.8	13.2
Grampian	5.4	6.3	+16.8	3.9
Tayside	10.5	11.2	+ 6.4	6.7
Fife	8.1	8.8	+ 8.5	6.9
Strathclyde	85.3	96.4	+13.0	8.9
Lothian	17.9	20.4	+14.3	6.2
Central	6.6	7.1	+ 8.9	6.6
Dumfries & Galloway	3.7	3.9	+ 6.6	7.9
Borders	1.4	1.4	- 1.5	3.6
Scotland	144.1	161.4	+12.0	7.4

Source: *Department of Employment*

FIGURES 5 and 6 Bank Advances - Amount Outstanding\*

\* All figures in current prices

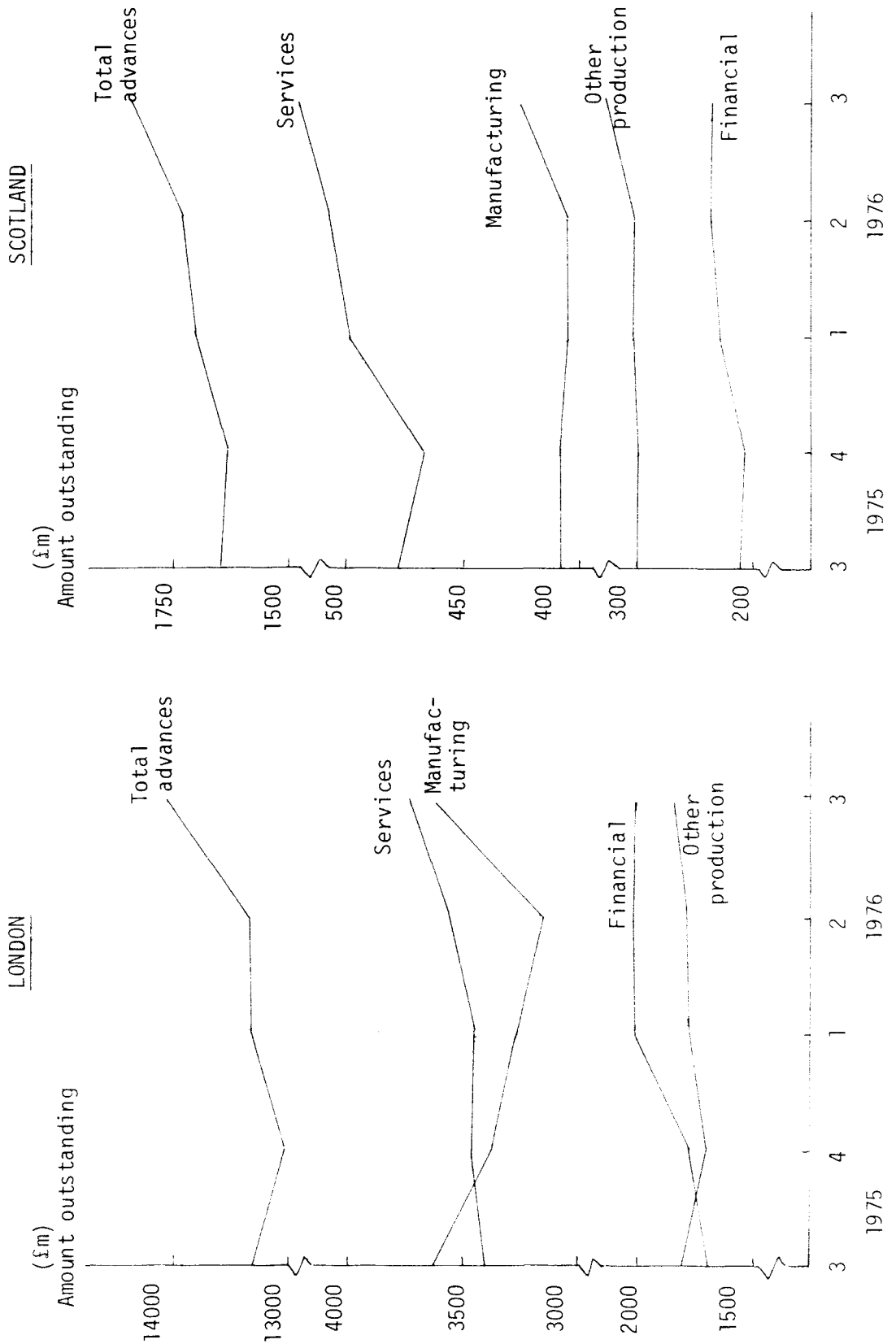
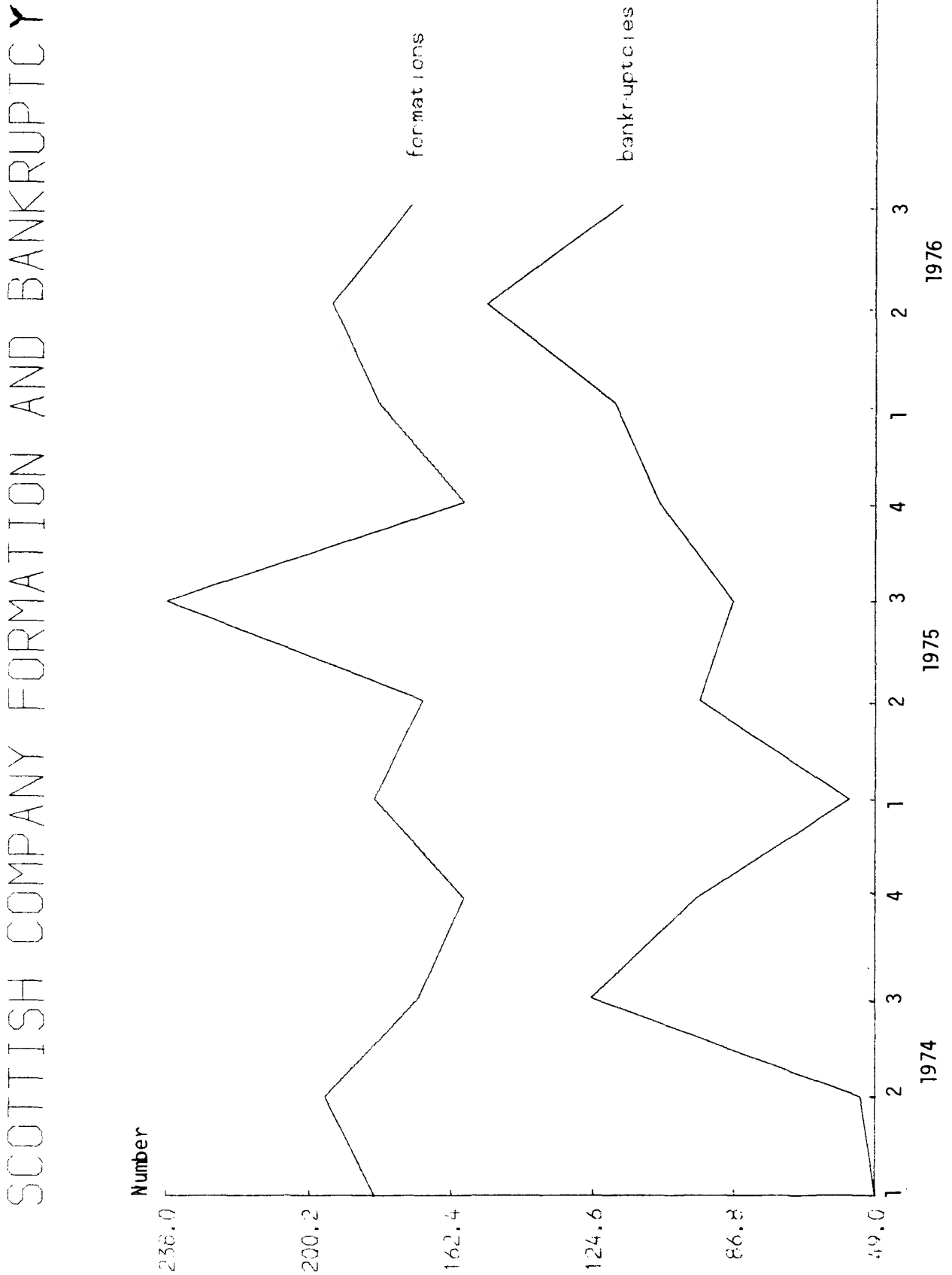


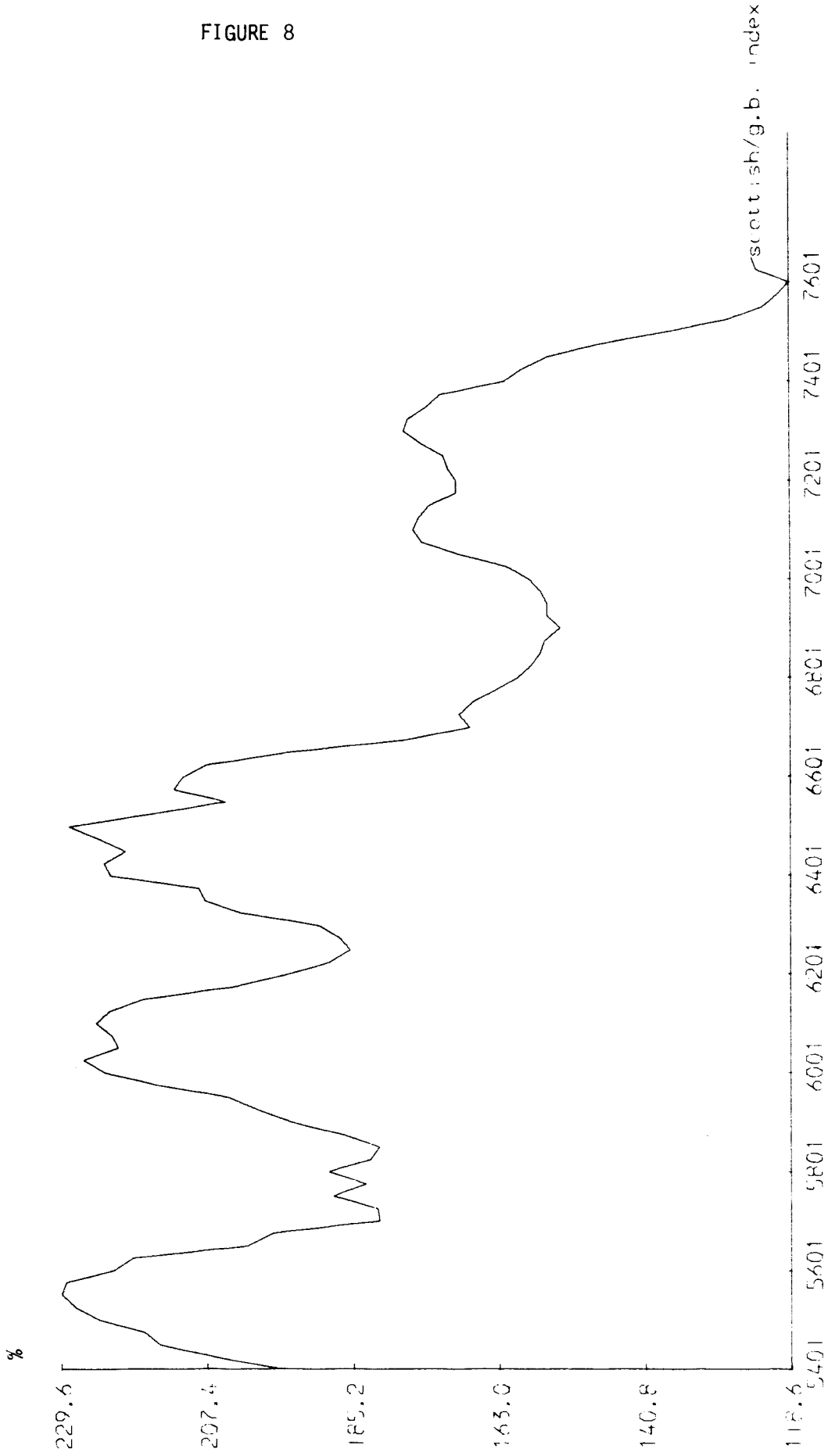
FIGURE 7 Company Formation and Bankruptcies in Scotland



Source: *The Registrar of Companies*

UNEMPLOYMENT RELATIVE: SCOT/G.B. 1954-76

FIGURE 8





SCOTLAND: UNEMPLOYMENT/VACANCIES 1954-76

FIGURE 9

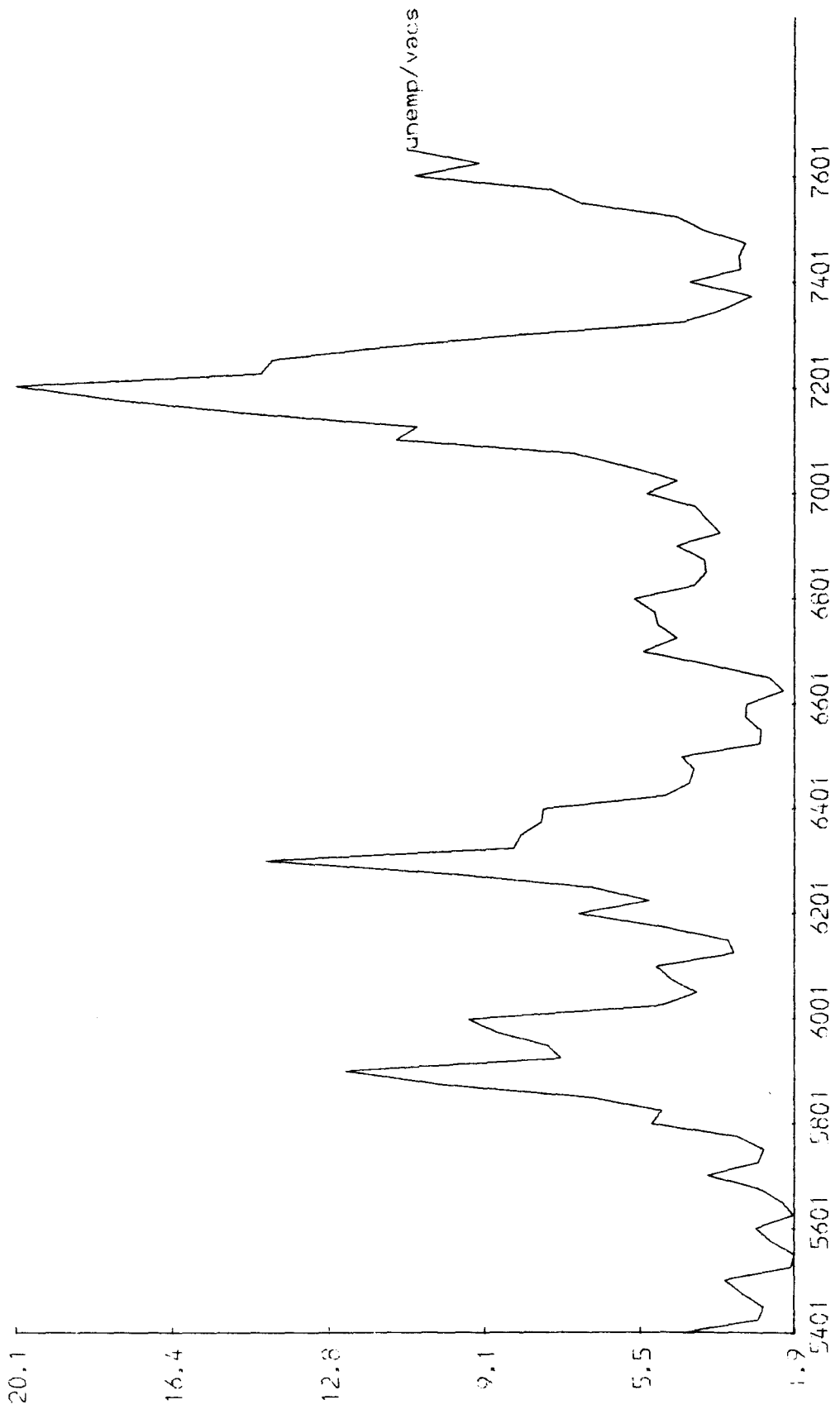
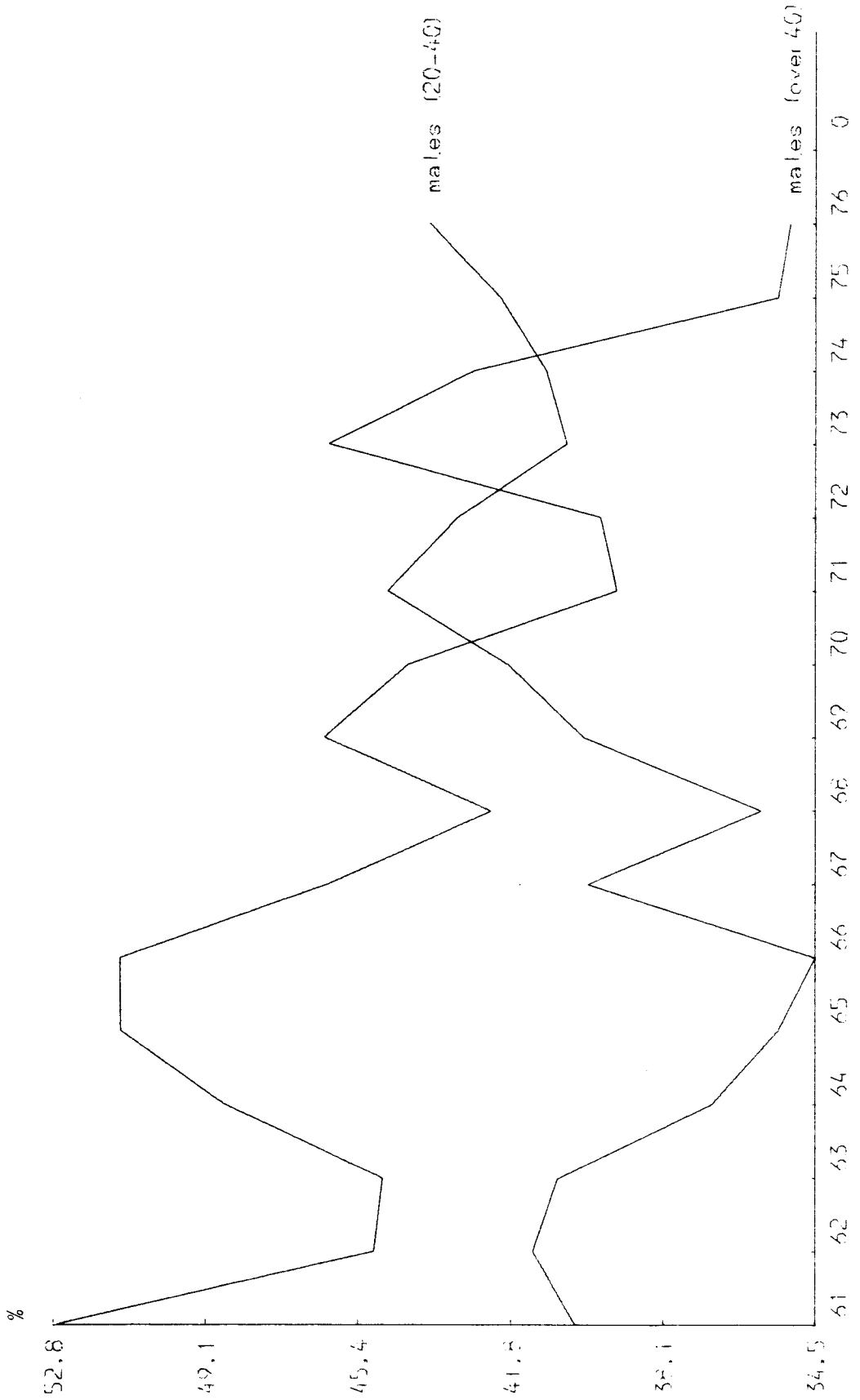


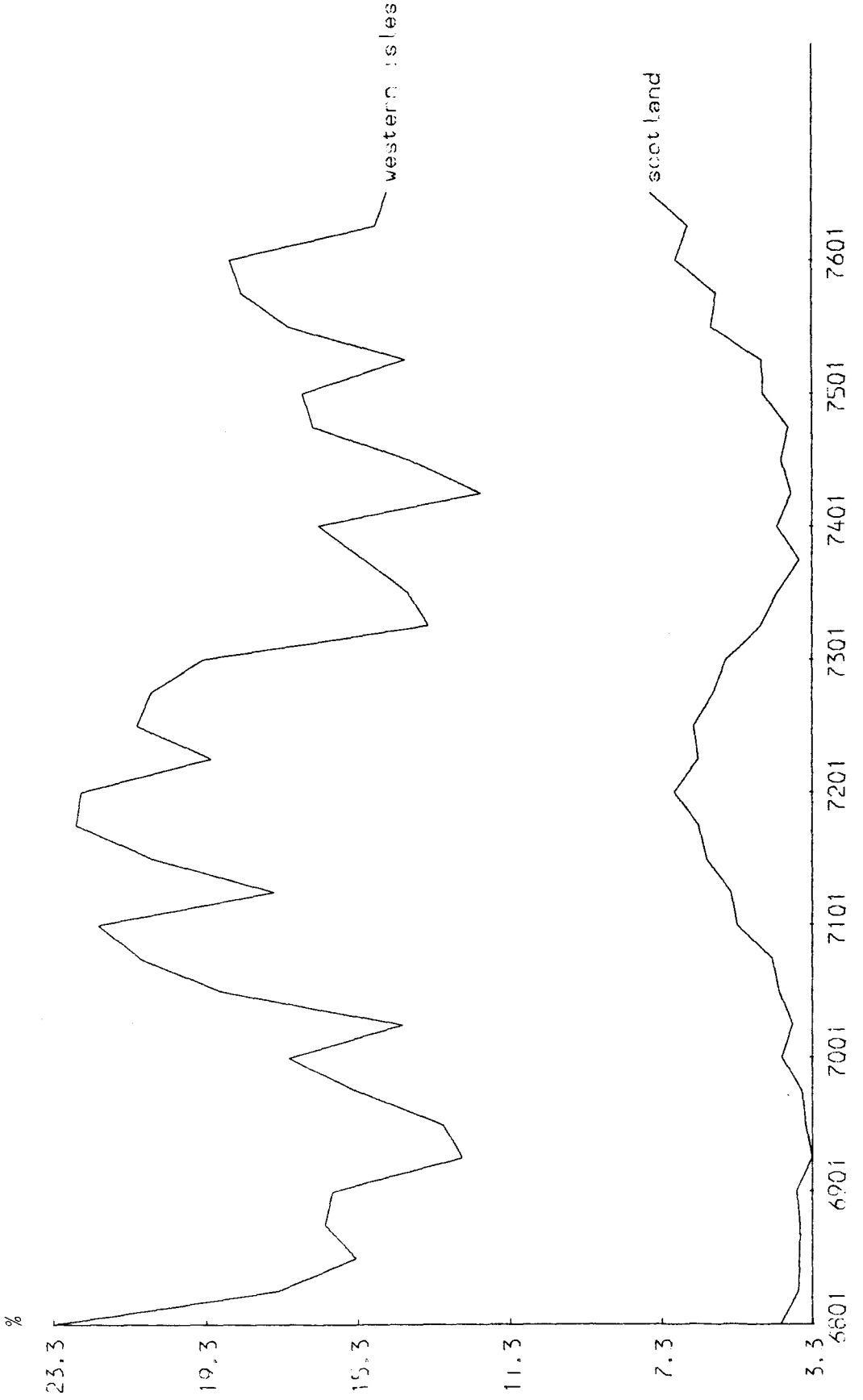
FIGURE 10

MALE UNEMPLOYMENT BY AGE GROUP 1961-1976



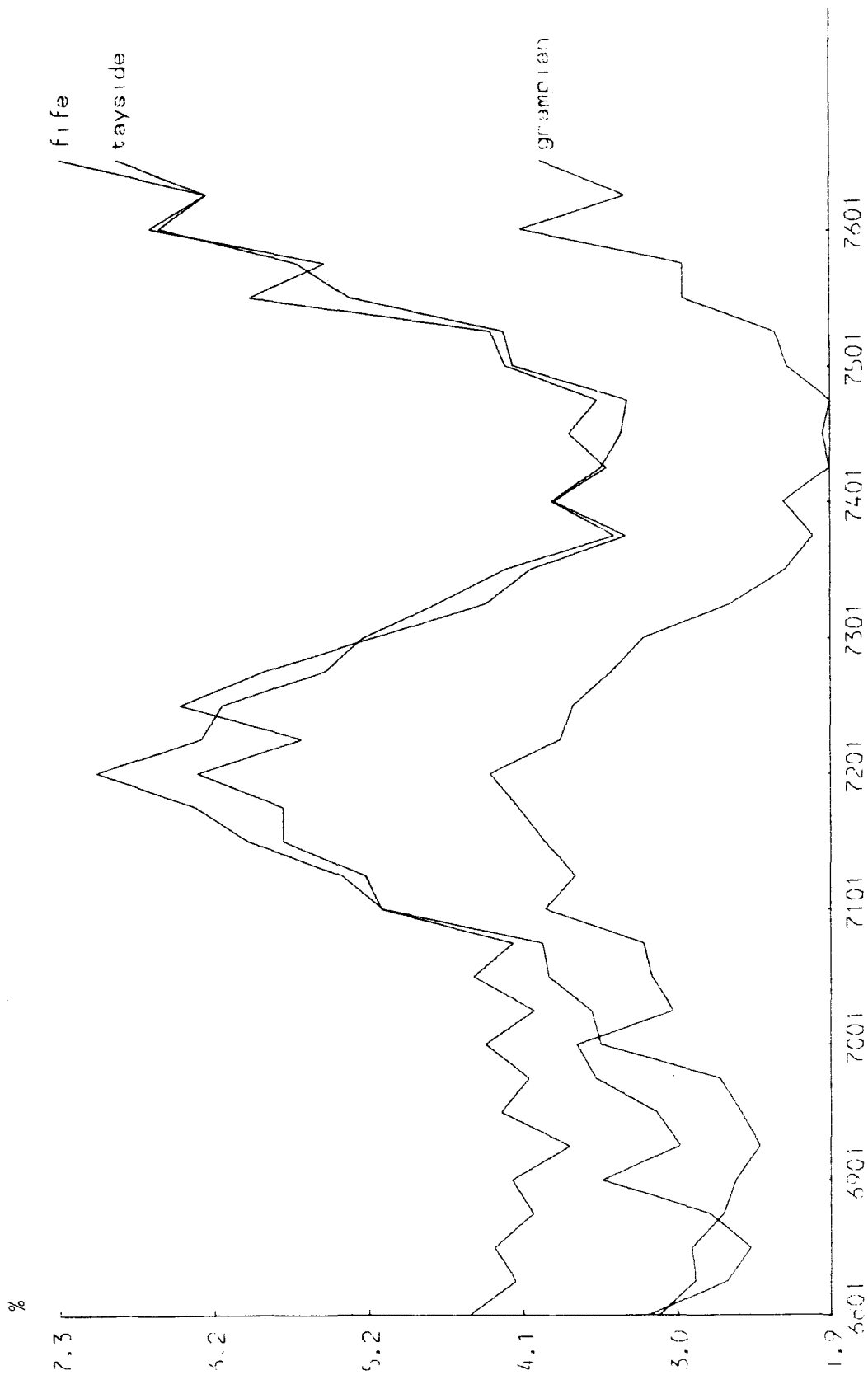
# REGIONAL UNEMPLOYMENT RATES 1968-76

FIGURE 11



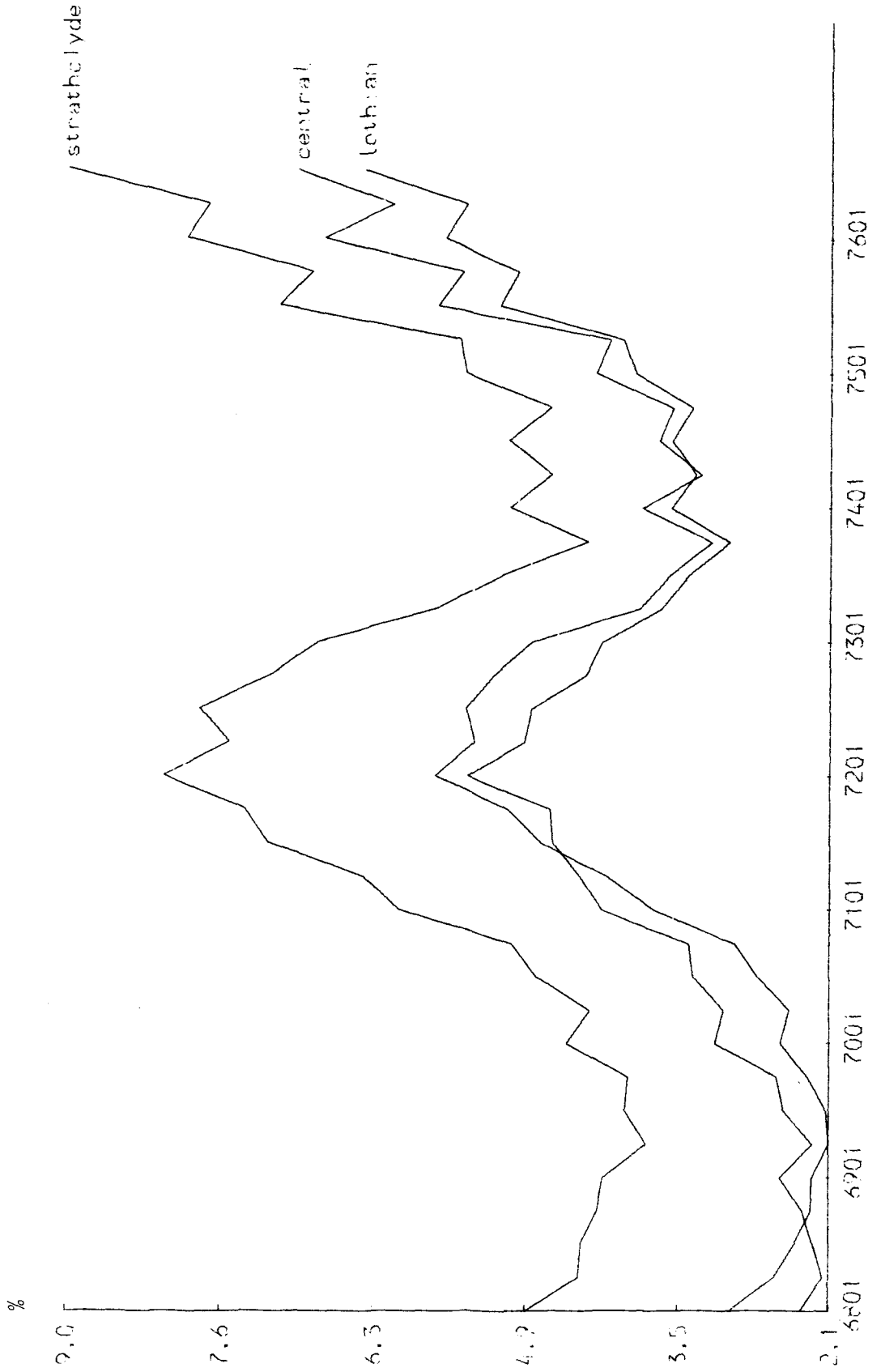
# REGIONAL UNEMPLOYMENT RATES 1968-76

FIGURE 12



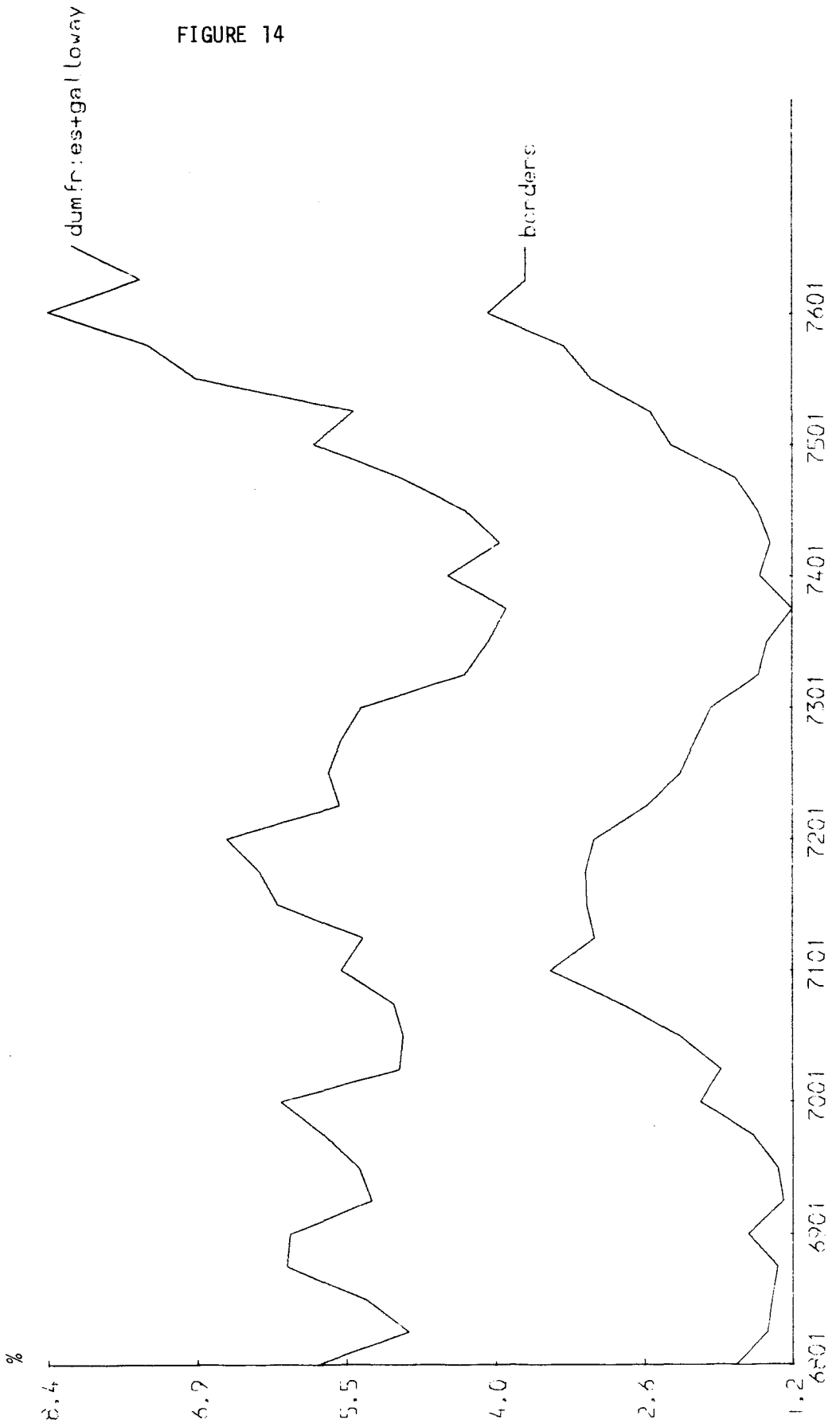
# REGIONAL UNEMPLOYMENT RATES 1968-76

FIGURE 13



# REGIONAL UNEMPLOYMENT RATES 1968-76

FIGURE 14



REGIONAL UNEMPLOYMENT RATES 1968-76

FIGURE 15

