

An introduction to framing multiple capitals

Dr Andrea B Coulson

Department of Accounting and Finance

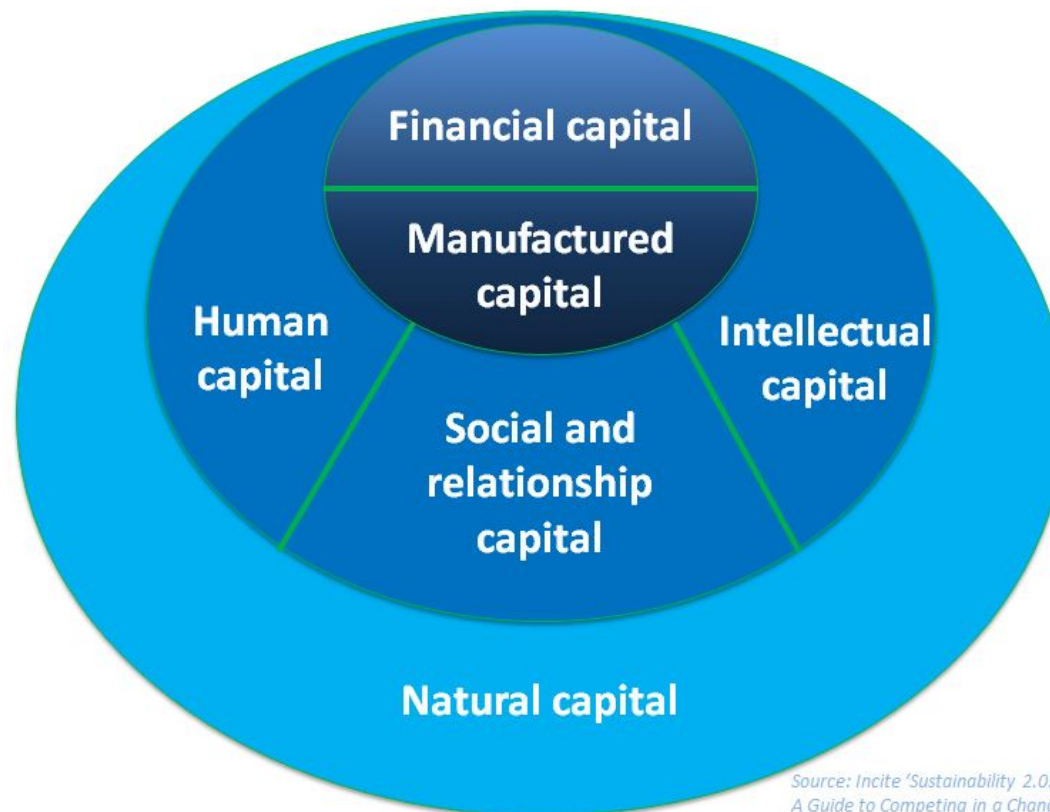
a.b.coulson@strath.ac.uk

tweet Andrea B Coulson

The metaphor of 'Capital'

- built, cultural, ecological, economic, environmental, family, financial, human, infrastructure, intellectual, man-made, material, manufactured, moral, multi-cultural, natural, nature's, organizational, physical, social, spiritual, symbolic, relationship, teaching, technological ...

IIRC <IR> and the Capitals



*Source: Incite 'Sustainability 2.0:
A Guide to Competing in a Changing World'*

Capitals Background Paper for <IR>

<http://www.theiirc.org/wp-content/uploads/2013/03/IR-Background-Paper-Capitals.pdf>

- Multi-disciplinary perspectives theory and practice
<http://www.theiirc.org/wp-content/uploads/2013/03/The-Capital-Methods-of-literature-review-and-sources.pdf>
- Visuals of alternative models of capital
<http://www.theiirc.org/wp-content/uploads/2013/03/The-Capitals-Visuals-of-alternative-models-of-capitals-.pdf>
- Organizations selected for review
<http://www.theiirc.org/wp-content/uploads/2013/03/The-Capitals-Organizations-selected-for-review.pdf>

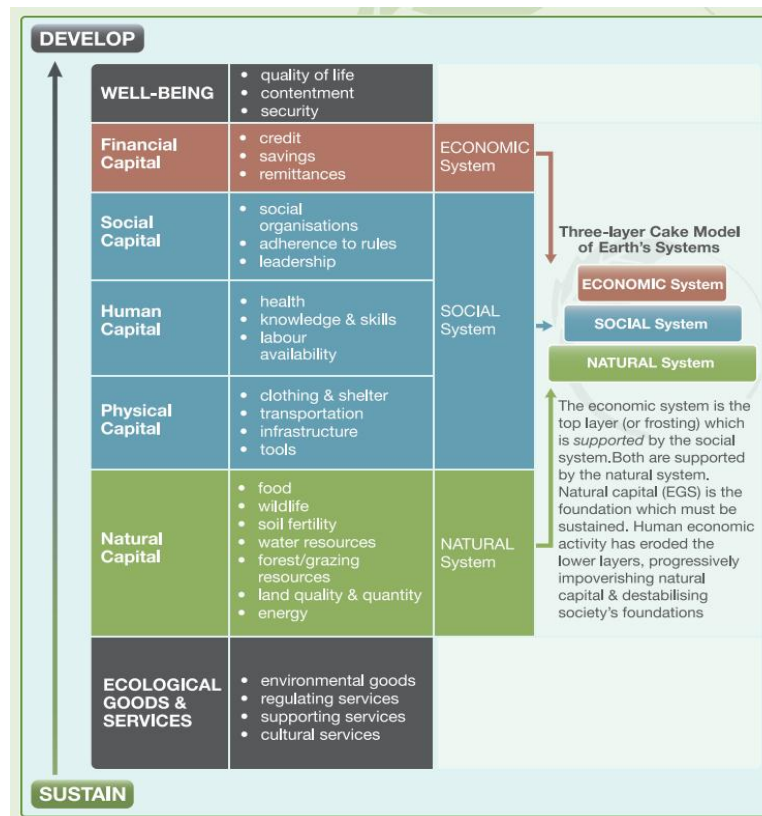
‘Capital’ a multi-disciplinary metaphor

- built, cultural, ecological, economic, environmental, family, financial, human, infrastructure, intellectual, man-made, material, manufactured, moral, multi-cultural, natural, nature’s, organizational, physical, social, spiritual, symbolic, relationship, teaching, technological ...

Three-layer Cake Model

Edmonton and Area Land Trust

http://www.ealt.ca/media/uploads/What_Do_We_Conserve.pdf



The Sigma Principles

The Sigma Project

<http://projectsigma.co.uk/Guidelines/Principles>



Social Capital in the creation of Intellectual Capital

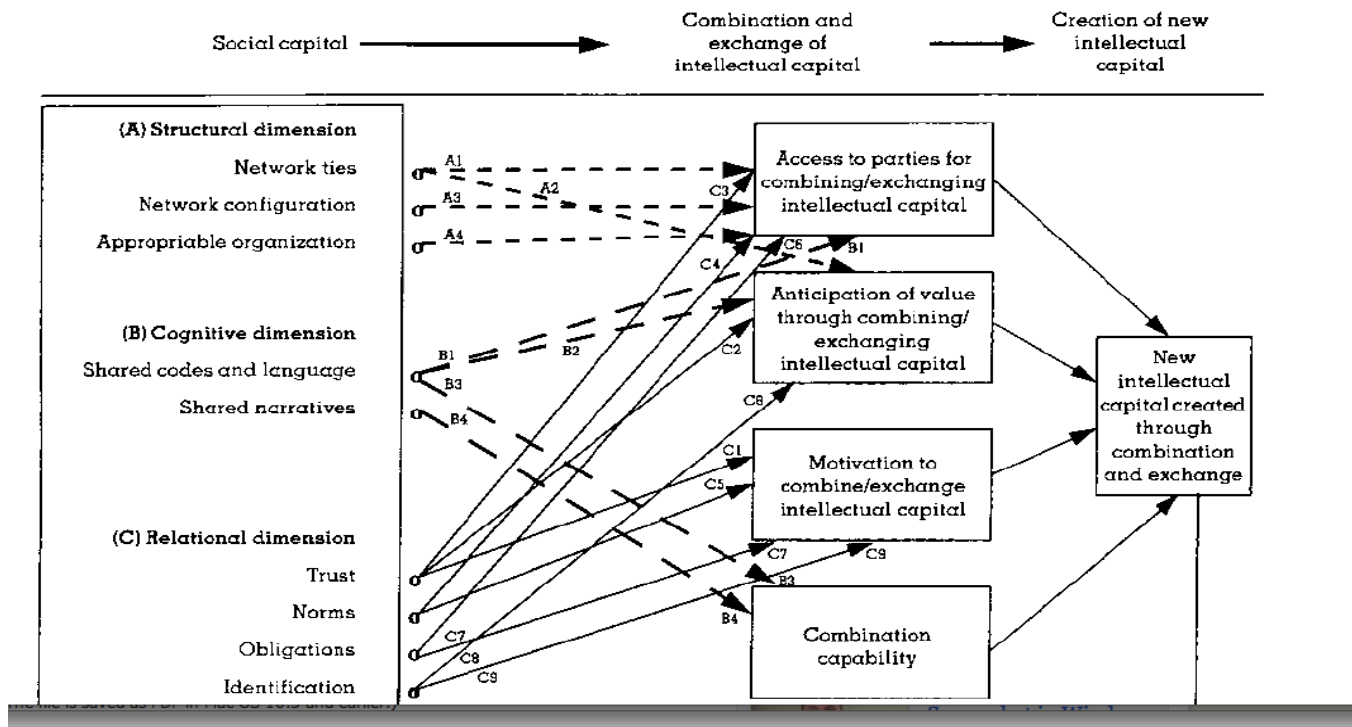
Nahapiet & Ghoshal (1998: 251)

1998

Nahapiet and Ghoshal

251

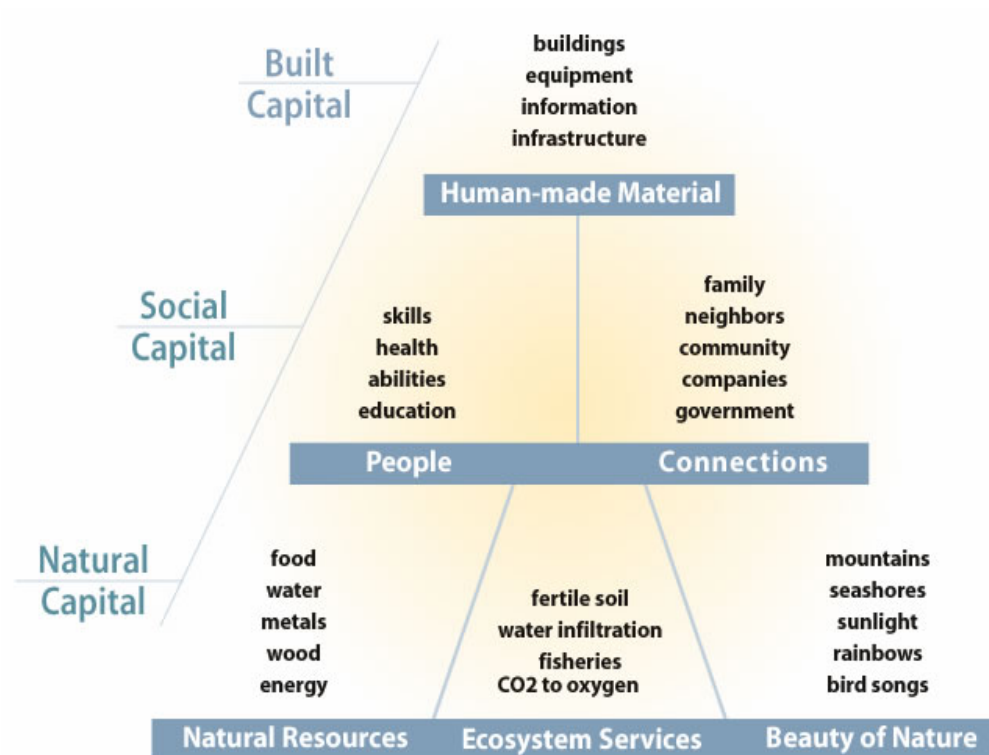
FIGURE 1
Social Capital in the Creation of Intellectual Capital



A community guide to nature tourism

Washington Department for Fish and Wildlife

<http://wdfw.wa.gov/viewing/tourism/community>



Social Media and the City

Blog by [Mack D. Male](#)

<http://blog.mastermaq.ca/2010/03/24/social-media-and-the-city/>



HaSTAR

Halcrow Sustainability Toolkit and Rating system

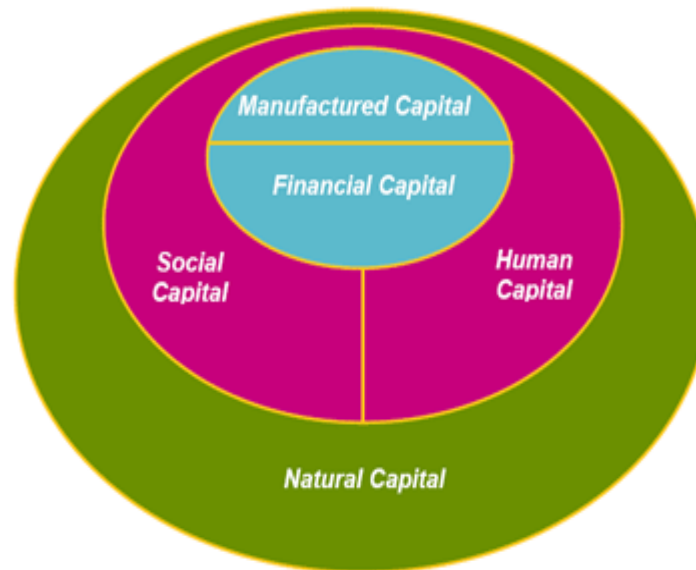
www.halcrow.com/Areas-of-expertise/Sustainable-development/HaSTAR-Halcrow-Sustainability-Toolkit-And-Rating-system



The Five Capitals Model

A framework for sustainability, Forum for the Future

www.forumforthefuture.org/project/five-capitals/overview

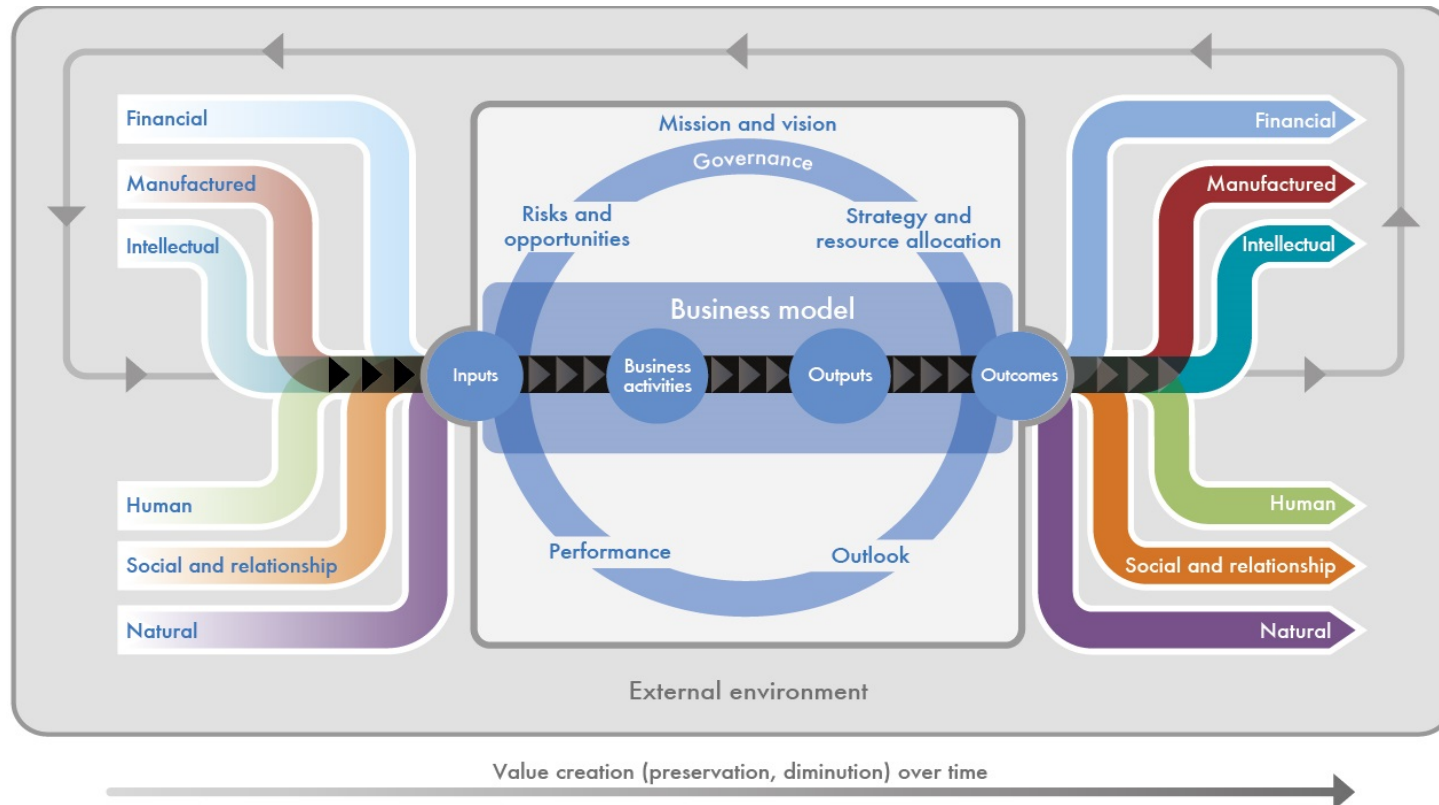


‘The capitals’

- “Together they represent stores of value that are the basis of an organization’s value creation.”

Adams et al. (2013;1) - Capitals Background Paper for <IR>. ACCA and NBA.

Capital in the <IR> value creation process



Framing capitals for <IR>

- “Integrated thinking takes into account the connectivity and interdependencies between the range of factors that affect an organization’s ability to create value over time, including
 - the capitals that an organization **uses and affects** and the **critical interdependencies**, including **trade-offs**, between them”

IIRC (2013; 2) - The International <IR> Framework

Framing capitals for <IR>

- “*Materiality*. An integrated report should disclose information about matters that substantively affect the organization’s ability to create value over the short, medium and long term.”

IIRC (2013;5) - The International <IR> Framework

Valuing capital

- As a representation of value, money is incommensurate with many other representations of critical value/s of, for example, justice and poverty
- Money as a metric is often combined with other measures values to resolve conflictbut can also lead to conflict
- What is 'measurement' and 'measurable' needs to be carefully considered

Bourdieu's "Capitals"

- Bourdieu (1991) referred to a framework of species of epistemological capital
 - social, economic, cultural and symbolic
 - multiple forms of capital social actors employ to further their goals
 - used to explain perceptions of the social world relation between knowledge, reflection and action
 - used to predict how new knowledge could transpire

“Symbolic capital”

- Symbolic capital is transcendental and able to facilitate critical self-awareness and produce change
- it is "the particular form that one or another of the species takes when it is grasped through categories of perception that recognise specific logic" (Bourdieu, 1990;119)
- important in co-ordinating different discourses (of academics, policy makers, individuals and political commentators)
- a basic component of homology across fields

Symbolism and change

Bourdieu proposes

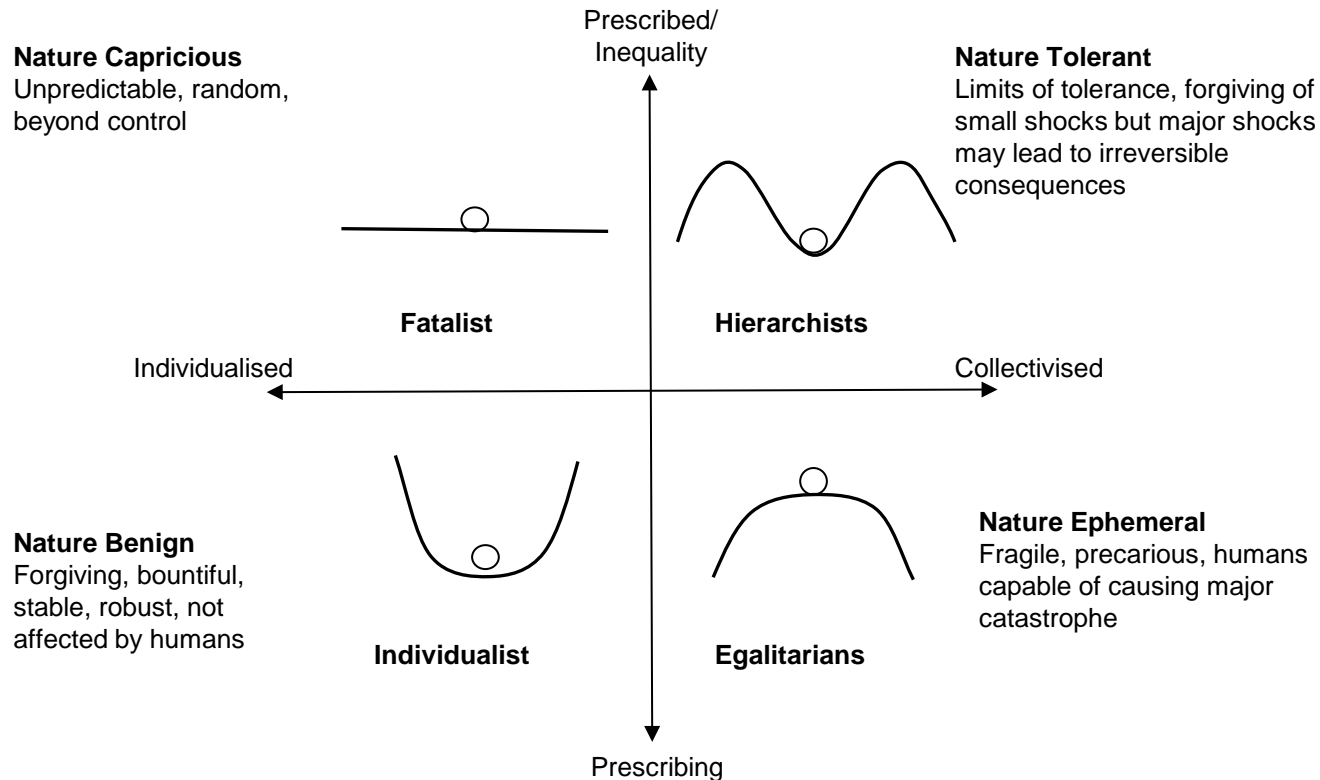
- peripheries of discursive fields are more likely to produce symbols than information
- peripheries are incubators for knowledge that change the way social agents communicate, appreciate and act on cultural objects
- discourses can be reconstituted as forms of social wealth arising out of collective experience

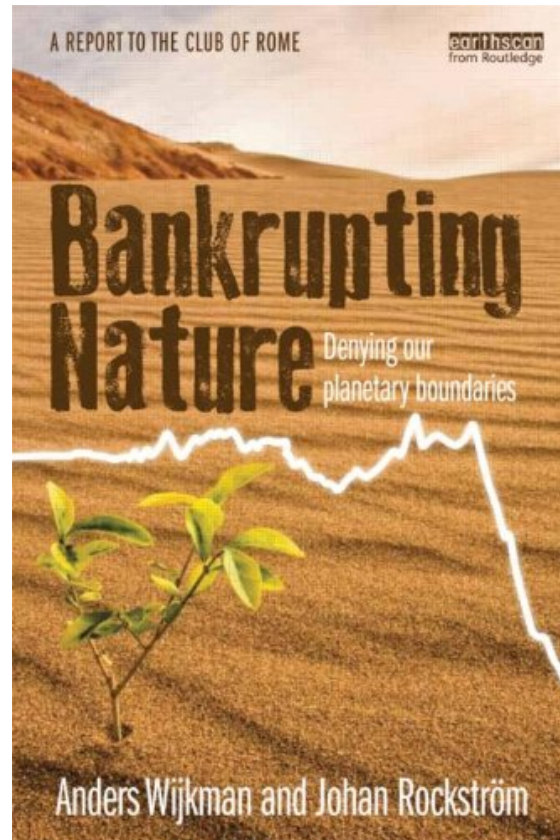
Symbolism, worldviews and myths of nature

- Cultural worldviews (see Douglas, 1970; 1982) fatalist (isolated), hierarchical, egalitarian and individualistic
- We need to think about ways of organizing not organizations (Thompson et al., 1990)
- Plural rationalities and myths of nature (Adams, 1995)

Four rationalities: myths of nature and cultural perspectives on risk management

(adapted from Adams, 1995; 33 fig. 3.3)





Wijkman A. and J. Rockström (2011) Bankrupting Nature: denying our planetary boundaries. London; Routledge.

An introduction to framing multiple capitals

Please consider

- Capital as a metaphor
- relationships and (inter)dependencies within and between capitals
- boundaries and materiality thresholds
- symbolic representation of value/s, (in)equalities and (in)commensurability
- priorities and possibilities of inter/intra capital trade-offs
- engagement on the philosophies of integrated thinking, information and symbolism

Thank you

Dr Andrea B Coulson
Department of Accounting and Finance
a.b.coulson@strath.ac.uk
tweet Andrea B Coulson



University of
Strathclyde
Glasgow