

a)

## Certificate of Analysis

**Product Name:** FRET peptide  
**Sequence:** E(EDANS)GTLGK(DABCYL)  
**Sequence(Three Letters Code):** Glu-(EDANS)-Gly-Thr-Leu-Gly-Lys(DABCYL)  
**Molecular Weight:** 1103.23  
**HPLC Analysis:** Peptide Purity:97.22%  
(See attached RP-HPLC chromatogram)  
**MS Analysis:** ESI\_MS  
(See attached MS spectrum)  
**Solubility:** 1mg/ml in 30%ACN/70%H<sub>2</sub>O  
**Appearance:** lyophilized powder  
**Counter Ion:** Trifluoroacetate  
**Remarks:**

**For research purpose only.**

**Important: Storage conditions:-20° C, seal, avoid light, dry.**

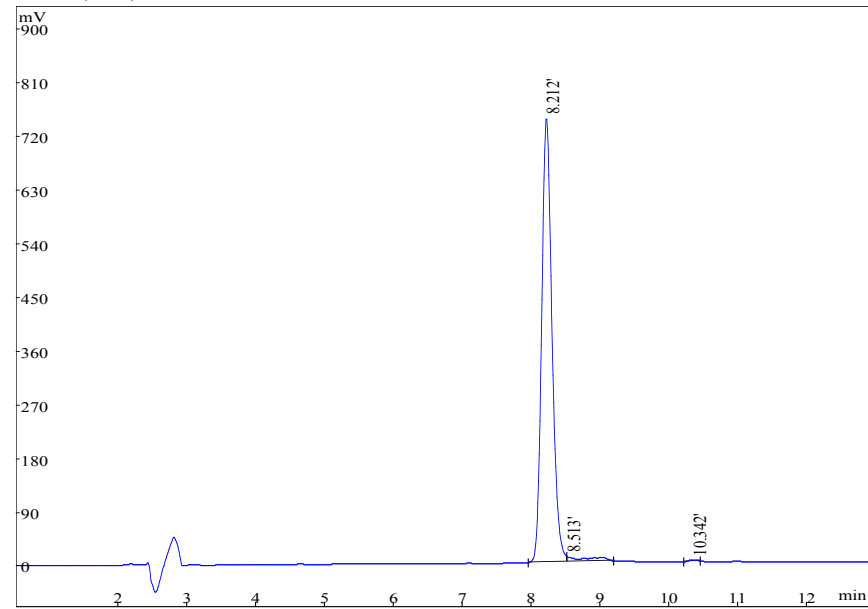
**Quality Assurance By:** \_\_\_\_\_

**Date:** 05-31-2016

b)

## HPLC Analysis Report

Measurement: Peak Area Run Time: 13min  
Calculation Type: Percent Wavelength: 220nm  
Flow Rate: 1ml/min Inj.Vol: 10uL  
Buffer A: 0.1% TFA in water Buffer B: 0.1%TFA in Acetonitrile  
Column: Kromasil 100-5C18,4.6mmX250mm,5 micron Column Temp: 35°C  
Gradient(linear): 30%-63% buffer B in 13min



Rank	Time	Name	Conc.	Calibrator	Area
1	8.212		97.22		7760826
2	8.513		2.483		198199
3	10.342		0.2902		23165
Total			100		7982190

c)

## MS Analysis Report

Expected MS: 1103.23

Ion Source: ESI

NEB: 10.00 CUR: 12.00

Flow Rate : 0.2ml/min

Mass Spectrometer: API 150EX

B. conc: 75%ACN/24.5%H<sub>2</sub>O/0.5%Ac

IS: -4500 TEM: 0.00

Run Time: 1min

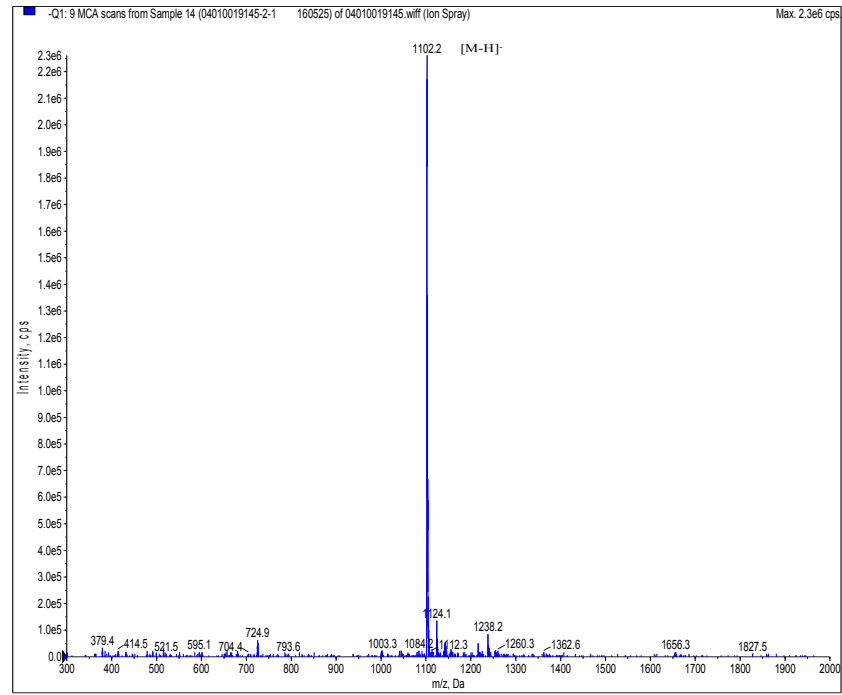


Figure S9 Characterisation of the FRET peptide as provided by the supplier (Chinapeptide). a) Certificate of analysis and product specifications. b) HPLC chromatogram. c) Mass Spectroscopy trace.