

ANALYSIS ON THE HULL GIRDER ULTIMATE STRENGTH OF A BULK CARRIER USING SIMPLIFIED METHOD BASED ON AN INCREMENTAL – ITERATIVE APPROACH

Özgür Özgüç

Det Norske Veritas AS
Offshore Classification South East Asia
10 Science Park Drive 118224 Singapore
E-mail: Ozgur.Ozguc@dnv.com

N.D.P. Barltrop

Dept. of Naval Architecture and Marine Engineering,
Universities of Glasgow and Strathclyde,
Henry Dyer Building, 100 Montrose Street,
Glasgow G4 0LZ, UK
E-mail: n.barltrop@na-me.ac.uk

ABSTRACT

The hull girder ultimate strength of a typical bulk carrier is analyzed using simplified method based on an incremental – iterative approach. First, vertical bending moment is examined by seven different methods. The moment versus curvature curves and the values of the ultimate longitudinal moments at collapse states are determined for both hogging and sagging cases. Secondly, the ultimate strength under coupled vertical and horizontal bending moment is accounted. An interaction curve is obtained corresponding to the results of series of calculation for the ship hull subject to bending conditions with different angles of curvature. It is found that the interaction curve is asymmetrical because the hull cross-section is not symmetrical with respect to horizontal axis and the structural response of the elements under compression is different from that under tension due to nonlinearity caused by buckling. The angles of the resultant bending moment vector and that of the curvature vector are different in investigated cases. The interaction design equations proposed by other researches are also addressed to discuss the results presented by this study.

1 INTRODUCTION

A ship hull is a structure composed of plating stiffened by girders and stiffeners. The hull is subject to loading generated by hull weight, cargo, equipment etc. and buoyancy force. The loading cause vertical and horizontal bending moments, vertical and horizontal shear forces, and torsional moment. Essential in estimation of the hull strength is the vertical bending moment as generating the largest stresses in the ship structures, especially in the middle part of the ship hull. However, a ship is in general subjected to both vertical and horizontal bending moments, particularly in a rough sea with significant roll motions. The ultimate hull girder strength under horizontal bending is generally higher than vertical bending. This is because the ship's breadth is usually larger than its depth.

Yao et al., (1994) studied on the ultimate hull girder strength interaction relationship under combined vertical and horizontal bending for double hull tanker. Mansour et al., (1995) presented an empirical interaction equations based on the results of calculations of one tanker, one container ship and one cruiser. Paik et al., (1996) discussed the ultimate hull girder strength under combined vertical and horizontal bending moment using ALPS/ISUM program for eleven vessels: five tankers, two bulk carriers, two container vessels and two cruisers. It was found that the ultimate strength interaction relationship for combined loading was unaffected by the level of initial imperfections, even though the ultimate strengths itself would be reduced as the initial imperfections increase. The simple expression was proposed, regardless of initial imperfection level. Another interaction equation was proposed by Gordo and Guedes Soares, (1996, 1997) based on the results for five tankers and six container ships. Rizzuto, (1997) also discussed on this subject. Hu et al., (2001) analyzed the ultimate longitudinal strength of a typical bulk carrier by using a simplified method under combined vertical and horizontal bending moments. An interaction equation suitable for bulk carrier was proposed based on the results of the investigated ship.

Ozguç et al., (2006a, 2005b) have calculated the ultimate coupled vertical and horizontal bending moment capacity on single side skin and double side skin bulk carriers which corresponding to intact and investigated various collision damage scenarios, in which a progressive collapse analysis based on

Smith's method was carried out. It has been noted that the combined effect of the vertical and horizontal bending moments is important, especially when the ship is damaged.

Ozguç et al., (2007a) have presented the most extensive investigation of the hull girder ultimate strength under coupled bending moment. The main objective of the study was to develop hull girder ultimate strength interaction relationships useful for the ship designs subject to a combination of vertical and horizontal bending moments, where the ordinary Smith's method was employed using a developed computer code NEPTUNE with average stress – average strain relationship of element. The procedure adopted was applied to analyze on the seventeen ships such as nine tankers, five bulk carriers, one general cargo and two container vessels. The findings obtained were used to develop a rapid procedure for the assessment of the ultimate capacity of the hull girder.

In this paper, the hull girder ultimate strength of a typical bulk carrier is analyzed using simplified method based on an incremental – iterative approach. First, vertical bending moment is examined by seven different methods. The moment versus curvature curves and the values of the ultimate longitudinal moments at collapse states are determined for both hogging and sagging cases. Secondly, the ultimate strength under coupled vertical and horizontal bending moment is accounted. An interaction curve is obtained corresponding to the results of series of calculation for the ship hull subject to bending conditions with different angles of curvature. It is found that the interaction curve is asymmetrical because the hull cross-section is not symmetrical with respect to horizontal axis and the structural response of the elements under compression is different from that under tension due to nonlinearity caused by buckling. The angles of the resultant bending moment vector and that of the curvature vector are different in investigated cases. The interaction design equations proposed by other researches are also addressed to discuss the results presented by this study.

2 FEATURES OF THE METHOD

A progressive collapse analysis based on the Smith method (1977) is carried out in this study. In this approach, the ultimate hull girder bending moment capacity is defined as the peak value of the curve with vertical bending moment versus the curvature of the ship cross section. The curve is obtained by

means of an incremental – iterative approach. Each step of the incremental procedure is represented by the calculation of the bending moment, which acts on the hull transverse section as the effect of an imposed curvature. For each step, the curvature value is obtained by summing an increment of curvature to the value relevant to the previous step. This increment of the curvature corresponds to an increment of the rotation angle of the hull girder transverse section around its horizontal axis. This rotation induces axial strains in each hull structural element, whose value depends on the position of the element. In hogging condition, the structural elements above the neutral axis are lengthened, while the elements below the neutral axis are shortened. Vice-versa in sagging condition.

The stress induced in each structural element by the strain is obtained from the load-end shortening curve of the element, which takes into account the behavior of the element in the non-linear elastic-plastic domain. The distribution of the stresses induced in all the elements composing the hull transverse section determines, for each step, a variation of the neutral axis position, since the relationship is non-linear. The new position of the neutral axis relevant to the step considered is obtained by means of an iterative process, imposing the equilibrium among the stresses acting in all the hull elements. Once the position of the neutral axis position of the neutral axis is known and the relevant stress distribution in the section structural elements is obtained, the bending moment of the section around the new position of the neutral axis, which corresponds to the curvature imposed in the step considered, is obtained by summing the contribution given by each element stress. In applying the procedure described in above, the following assumption are generally made,

- The ultimate strength is calculated at the hull transverse sections between two adjacent transverse webs
- The hull girder transverse section remains plane during each curvature increment
- The hull material has an elastic-plastic behavior
- The hull girder transverse section is divided into a set of elements, which are considered to act independently
- Overall grillage collapse is avoided by sufficiently strong transverse frames

3 THE FOLLOWED STEPS

The vertical bending moment is indeed the most important load effect when considering the hull girder collapse. However, in many types of ships, the combined effect of the vertical and the horizontal bending moments is important. It is well known the basic equations that relate the applied vertical and horizontal bending moments to the longitudinal stress are very simple and may be summarized;

$$\sigma_i = \frac{M_x \cdot y_i}{I_x} - \frac{M_y \cdot x_i}{I_y} \quad (1)$$

or it may be expressed as a function of the total moment by:

$$\frac{\sigma_i}{M} = \frac{y_i \cdot \cos \varphi}{I_x} - \frac{x_i \cdot \sin \varphi}{I_y} \quad (2)$$

Where φ is the angle that the bending moment vector makes with the baseline, and x_i and y_i are the coordinates of the element i in the referential located in any point of the neutral axis. For given points of the cross section, this relation is constant until the yield stress of the material is reached in any point of the section. Once the cases mentioned above occur, the neutral axis moves away from its original position and thus the constancy of the relation may be broken. Similarly, the relation between the angle of the resultant bending moment vector φ and the angle of the curvature vector θ is constant in the linear elastic range. This relation may be express by:

$$\operatorname{tg} \varphi = \frac{I_y}{I_x} \operatorname{tg} \theta \quad (3)$$

When the curvature is increased the angle changes slightly towards the neutral axis, but this shift becomes very quick for curvatures near the buckling of the bottom and side plating, which corresponds to the maximum horizontal component of the bending moment. The moment vector moves its direction

towards the neutral axis until the maximum of the vertical component, and even further that that, because of the unloading in the horizontal moment. This behavior is shown in Figure 1.

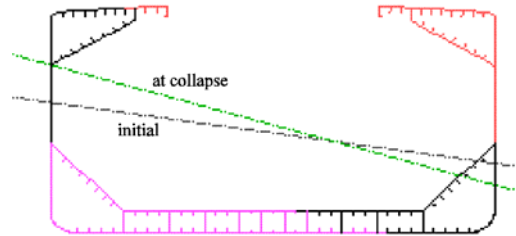


Figure 1 Initial and at collapse position of the neutral axis under combined bending moment

The most general case corresponds to that in which the ship is subjected to curvature in the x and y directions respectively denoted as C_x , C_y . The overall curvature C is related to these two components by:

$$C = \sqrt{C_x^2 + C_y^2} \quad (4)$$

Or

$$C_x = C \cdot \cos \theta \quad \text{and} \quad C_y = C \cdot \sin \theta \quad (5)$$

adopting the right-hand rule, where θ is the angle between the neutral axis and the x-axis and is related to the components of the curvature by:

$$\text{tg } \theta = \frac{C_y}{C_x} \quad (6)$$

The strain at the centroid of an element i is ε_i which depends on its position and on the hull curvature, as given by:

$$\varepsilon_i = y_{gi} \cdot C_x - x_{gi} \cdot C_y \quad (7)$$

Where (x_{gi}, y_{gi}) are the coordinates of the centroid of the element i referred to the central point at each curvature. Once the state of strain in each element is determined, the corresponding average stress may be calculated according to the method described above, and consequently the components of the bending moment for a curvature C are given by:

$$M_x = \sum y_{gi} \cdot \sigma_i \cdot A_i \quad (8)$$

$$M_y = \sum x_{gi} \cdot \sigma_i \cdot A_i \quad (9)$$

Where σ_i represents the stress of element i at (x_{gi}, y_{gi}) . A_i represents the cross sectional area of element i .

This is the bending moment on the cross section after calculating properly the instantaneous position of the intersection of the neutral axis associated with each curvature and the centerline (called the center of force). The condition to determine the correct position of neutral axis is:

$$\sum \sigma_i A_i = 0 \quad (10)$$

A trial and error process has to be used to estimate its position correctly. The total net load in the section, NL , or the error in the shift estimate ΔG should be less than or equal to a sufficiently low value (Gordo & Soares 1996). In this paper, the following equation is used.

$$NL = \sum \sigma_i A_i \leq 10^{-6} \sigma_{0i} \sum A_i \quad (11)$$

Where σ_{0i} is the material yield stress of element i .

Elastic-plastic collapse of the structural elements

The equation describing the load-end shortening curve $\sigma - \varepsilon$ or the elastic-plastic collapse of structural elements composing the hull girder transverse section can be obtained from the following formula, valid for both positive (shortening) and negative (lengthening) strains.

$$\sigma = \Phi \sigma_o \quad (12)$$

where, Φ is edge function, σ_o is yield stress of element.

$$\Phi = \begin{cases} -1 & \text{for } \varepsilon < -1 \\ \varepsilon & \text{for } -1 < \varepsilon < 1 \\ 1 & \text{for } \varepsilon > 1 \end{cases} \quad (13)$$

Beam – column buckling failure mode

The equation describing the load-end shortening curve $\sigma_{CR1} - \varepsilon$ for the beam-column buckling of the stiffeners composing the hull girder transverse section can be obtained from the following formula:

$$\sigma_{CR1} = \Phi \sigma_{C1} \left(\frac{A_s + b_E t}{A_s + b t} \right) \quad (14)$$

where σ_{C1} is critical stress in MPa, A_s is net sectional area of a stiffener and b is spacing of stiffeners.

$$\sigma_{C1} = \begin{cases} \frac{\sigma_{E1}}{\varepsilon} & \text{for } \sigma_{E1} \leq \frac{\sigma_o}{2} \varepsilon \\ \sigma_o \left(1 - \frac{\Phi \sigma_o \varepsilon}{4 \sigma_{E1}} \right) & \text{for } \sigma_{E1} > \frac{\sigma_o}{2} \varepsilon \end{cases} \quad (15)$$

where σ_{C1} is based on the Johnson-Ostenfeld formulation accounting for inelastic effects on the column's buckling. In equation (14) the second term computes the loss of efficiency of plate due to compression loading. Effective width, b_E , based on the Frankland's approach developed to the plate strength and given by (Ozguc et al 2006b, 2007b);

$$b_E = \begin{cases} b & \text{for } \beta_E \leq 1.25 \\ \left(\frac{2.25}{\beta_E} - \frac{1.25}{\beta_E^2} \right) b & \text{for } 1.25 < \beta_E \leq 3.25 \\ \left(\frac{1.91}{\beta_E} \right) b & \text{for } \beta_E > 3.25 \end{cases} \quad (16)$$

where, σ_{E1} is Euler column buckling stress, which is calculated as below,

$$\sigma_{E1} = \pi^2 E \frac{I_E}{A_E a^2} \quad (17)$$

where, I_E is net moment of inertia of ordinary stiffeners with attached shell plating of width b_{E1} , A_E is net sectional area of stiffeners with attached shell plating of effective width b_E , and a is length of stiffened plate.

$$b_{E1} = \begin{cases} \frac{b}{\beta_E} & \text{for } \beta_E > 1 \\ b & \text{for } \beta_E \leq 1 \end{cases} \quad (18)$$

where, $\beta_E = \frac{b}{t} \sqrt{\frac{\varepsilon \sigma_o}{E}}$ is defined.

Plate induced buckling failure mode

The equation describing the load-end shortening curve $\sigma_{CR2} - \varepsilon$ for the plate buckling composing the hull girder transverse section can be obtained the following formula:

$$\sigma_{CR2} = \Phi \left(\frac{A_S + b_E t}{A_S + bt} \right) \quad (19)$$

Flexural – torsional (tripping) buckling failure mode

The equation describing the load-end shortening curve $\sigma_{CR3} - \varepsilon$ for the flexural – torsional (tripping) buckling of stiffeners composing the hull girder transverse can be obtained according to following formula:

$$\sigma_{CR3} = \Phi \left(\frac{A_S \sigma_{C3} + bt \sigma_{CP}}{A_S + bt} \right) \quad (20)$$

where, σ_{C3} is defined as critical stress.

$$\sigma_{C3} = \begin{cases} \frac{\sigma_{E3}}{\varepsilon} & \text{for } \sigma_{E3} \leq \frac{\sigma_o}{2} \varepsilon \\ \sigma_o \left(1 - \frac{\Phi \sigma_o \varepsilon}{4 \sigma_{E3}} \right) & \text{for } \sigma_{E3} > \frac{\sigma_o}{2} \varepsilon \end{cases} \quad (21)$$

where, σ_{E3} is Euler torsional buckling stress, defined as follows.

$$\sigma_{E3} = \frac{\pi^2 EI_W}{I_P a^2} \left(\frac{K_C}{m^2} + m^2 \right) + 0.385E \left(\frac{I_t}{I_P} \right) \quad (22)$$

where, I_w is net sectional moment of inertia of the stiffener about its connection to the attached plating and is defined as follows.

$$I_w = \begin{cases} \frac{h_w^3 t_w^3}{36} & \text{for flat bars} \\ \frac{t_f b_f^3 h_w^2}{12} & \text{for T-sections} \\ \frac{b_f^3 h_w^2}{12(b_f + h_w)^2} [t_f b_f^2 + 2b_f h_w + 4h_w^2 + 3t_w b_f h_w] & \text{for angles and bulb sections} \end{cases} \quad (23)$$

where, I_p is net polar moment of inertia of the stiffener about its connection to the attached plating, defined as follows.

$$I_p = \begin{cases} \frac{h_w^3 t_w}{3} & \text{for flat bars} \\ \left(\frac{h_w^3 t_w}{3} + h_w^2 b_f t_f \right) & \text{for stiffeners with face plate} \end{cases} \quad (24)$$

where, I_t is St. Venant's net moment of inertia of stiffener without attached plating, defined as follows:

$$I_t = \begin{cases} \frac{h_w t_w^3}{3} & \text{for flat bars} \\ \frac{1}{3} \left[h_w t_w^3 + b_f t_f^3 \left(1 - 0.63 \frac{t_f}{b_f} \right) \right] & \text{for stiffeners with face plate} \end{cases} \quad (25)$$

where, m is number of half waves, may be taken equal to the integer number and K_C is torsional buckling of axially loaded stiffeners, calculated by following, which is shown in Table 1.

$$m^2(m-1)^2 \leq K_C < m^2(m+1)^2 \text{ and } K_C = \left(\frac{C_0 a^4}{\pi^4 EI_w} \right) \quad (26)$$

where, C_0 is a spring stiffener of the attached plating and can be expressed as follows,

$$C_0 = \frac{Et^3}{2.73b} \quad (27)$$

Table 1 Torsional buckling of axially loaded stiffeners – Number of m half waves

K_C	$0 \leq K_C < 4$	$4 \leq K_C < 36$	$36 \leq K_C < 144$
m	1	2	3

where, σ_{CP} is buckling stress of attached plating, which can be determined by following formula.

$$\sigma_{CP} = \begin{cases} \sigma_o & \text{for } \beta_E \leq 1.25 \\ \left(\frac{2.25}{\beta_E} - \frac{1.25}{\beta_E^2} \right) \sigma_o & \text{for } 1.25 < \beta_E \leq 3.25 \\ \left(\frac{1.91}{\beta_E} \right) \sigma_o & \text{for } \beta_E > 3.25 \end{cases} \quad (28)$$

Web local buckling failure mode

The equation describing the load-end shortening curve $\sigma_{CR4} - \varepsilon$ for the web local buckling of flanged stiffeners composing the hull girder transverse section can be obtained from the following formula.

$$\sigma_{CR4} = \Phi \sigma_o \left(\frac{b_E t + h_{we} t_w + b_f t_f}{bt + h_w t_w + b_f t_f} \right) \quad (29)$$

where, h_{we} is effective height of the web, which can be determined by following formula:

$$h_{we} = \begin{cases} h_w & \text{for } \beta_w \leq 1.25 \\ \left(\frac{2.25}{\beta_E} - \frac{1.25}{\beta_E^2} \right) h_w & \text{for } 1.25 < \beta_w \leq 3.25 \\ \left(\frac{1.91}{\beta_E} \right) h_w & \text{for } \beta_w > 3.25 \end{cases} \quad (30)$$

$\beta_w = \frac{h_w}{t_w} \sqrt{\frac{\varepsilon \sigma_o}{E}}$ is defined while ε is relative strain.

4 STRUCTURAL MODELING OF VESSEL

Hull girder ultimate strength analysis of a single side skin bulk carrier under vertical bending is conducted through NEPTUNE computer code and adopted procedure is compared with seven different methods as well. Table 2 and Table 3 illustrate dimensions of the stiffeners and hull sectional properties, respectively while the cross-section is shown in Figure 2.

Table 2 Dimensions of longitudinals of Bulk Carrier

Stiffener No	Dimensions (mm)	Type	Yield Stress (MPa)
1	390x27	Flat-bar	392.0
2	333x9+100x16	Tee-bar	352.8
3	283x9+100x14	Tee-bar	352.8
4	283x9+100x18	Tee-bar	352.8

5	333x9+100x17	Tee-bar	352.8
6	283x9+100x16	Tee-bar	352.8
7	180x32.5x9.5	Bulb-bar	235.2
8	283x9+100x17	Tee-bar	352.8
9	333x9+100x18	Tee-bar	352.8
10	333x9+100x19	Tee-bar	352.8
11	383x9+100x17	Tee-bar	352.8
12	383x10+100x18	Tee-bar	352.8
12	383x10+100x21	Tee-bar	352.8
14	300x27	Flat-bar	392.0

Table 3 Hull sectional properties of the Bulk Carrier

Items	Vessel
LBP (m)	285.0
Breadth (m)	50.0
Depth (m)	26.9
Draft (m)	17.0
Block coefficient	0.836
Speed (knots)	15.5
DWT	180000
Cross-sectional area (m ²)	5.582
Neutral axis above base line (m)	11.024
I (m ⁴)	
Vertical	682.110
Horizontal	1796.763
Z (m ³)	
Deck	42.965
Bottom	61.872
σ_Y (MPa)	
Deck	HT40
Bottom	HT32

NOTES: I = Moment of inertia, Z = Section modulus

Hog. = Hogging case, and Sag. = Sagging case

σ_Y = Yield stress of material

5 CALCULATED RESULTS

The calculated results of ultimate hull girder strength under only vertical bending are presented in Table 4. The items in the tables are as follows,

I_y : Moment of inertia with respect to horizontal neutral axis, in m^4

z_G : Location of neutral axis above keel under vertical bending, in m

M_p : Fully plastic bending moment of cross-section, in MN.m

M_{YS} : Initial yield strength of deck, in MN.m

M_{YH} : Initial yield strength of bottom, in MN.m

M_{BS} : Local buckling strength of deck, in MN.m

M_{BH} : Local buckling strength of bottom, in MN.m

M_{US} : Ultimate bending moment of cross-section under sagging, in MN.m

M_{UH} : Ultimate bending moment of cross-section under hogging, in MN.m

(1): With small initial deflection without welding residual stress, Case 1

(2): With specified initial deflection and welding residual stress, Case 2

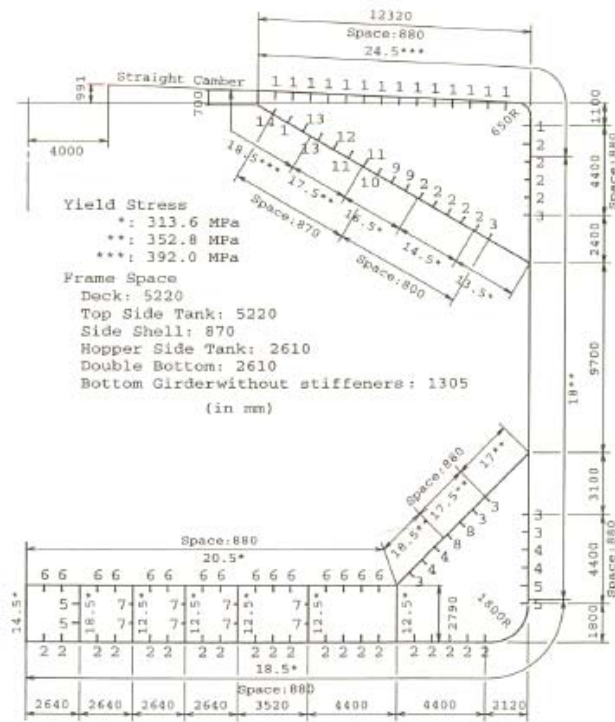


Figure 2 Cross-section of single side skin bulk carrier (Yao et al., 2000)

Table 4 Ultimate hull girder strength of bulk carrier under only vertical bending component carrier (Yao et al., 2000)

Items	Chen	Cho	Masaoka	Rigo (2)	Soares	Yao	Present Study
I_y	687.87	693.44	689.80	702.48	679.31	682.50	682.11
Z_g	11.20	11.06	11.03	10.66	11.15	10.87	11.02
M_P	20.87	19.90	19.86	20.03	19.64	20.12	20.22
M_{YS}	15.82	15.64	15.53	15.45	15.41	15.21	15.19
M_{YH}	21.58	21.83	21.79	23.04	21.20	21.91	19.41
M_{BS}	13.19	13.05	12.95	12.89	12.85	12.79	12.06
M_{BH}	16.43	16.63	16.59	17.55	16.14	16.68	16.20
M_{US-1}	15.35	14.40	16.82	-	13.72	15.67	14.79
M_{UH}	18.71	19.55	18.90	-	17.43	17.78	17.83

1							
M_{US-2}	15.20	13.69	16.02	14.84	-	14.45	14.19
M_{UH-}	19.06	18.99	18.56	17.08	-	17.36	17.34
2							

MOMENT (x 1000 MN-m)

The moment-curvature relationships obtained by different methods for Case (2) are plotted in Figure 3 and Figure 4.

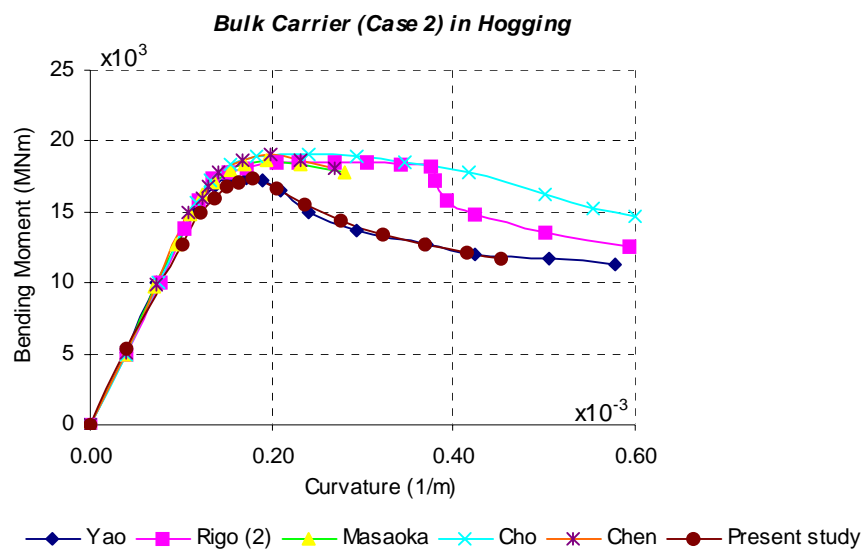


Figure 3 Moment curvature relationships for Bulk Carrier under only vertical bending component for Hogging condition

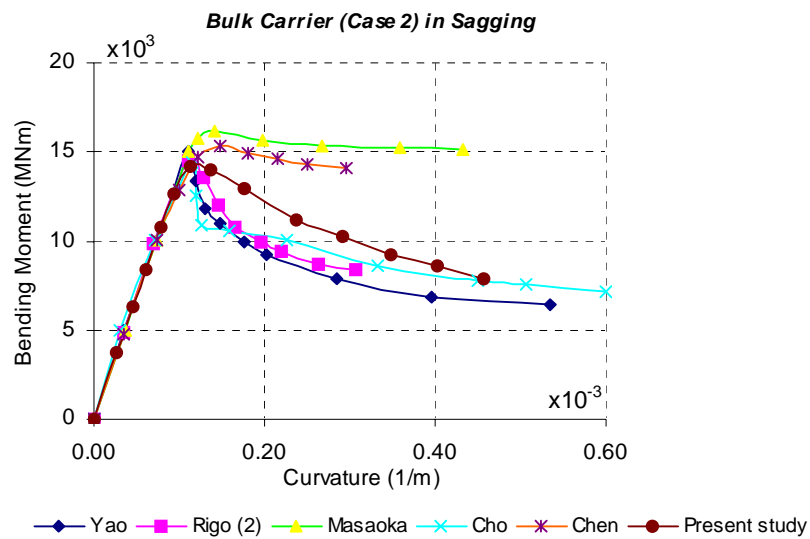


Figure 4 Moment curvature relationships for Bulk Carrier under only vertical bending component for Sagging condition

The simplified procedure used in this work to predict the behavior of the hull girder under vertical bending seems to be quite accurate when the results are compared with those obtained by seven different approaches.

It is seen that the scatter in the ultimate hull girder strength is not so large especially when the hull is subject to hogging bending moment. This may be partly because the bottom plate is relatively thick, and the hull buckling strength is nearly equal to the yield strength. On the other hand, the scatter of the ultimate hull girder strength in sagging is relatively large. This may be because different methods give somewhat different buckling strength of the deck, which has in general lighter scantling and is more sensitive to buckling than the bottom.

The capacity beyond the ultimate strength is somewhat scattering compared to the ultimate hull girder strength significant reduction in the capacity is not observed with ISUM results (Masaoka and Chen methods), while it is seen in the Smith's method using average stress – average strain relationships. The behavior strongly depends on the element characteristics, namely, whether or not the load shedding in the elements beyond their ultimate strength is correctly accounted for. Therefore, the

presented ISUM elements seem to have been failed to simulate load-shedding behavior of element. However, recently more sophisticated elements are proposed and still under development.

To simulate the load shedding (capacity reduction) beyond the ultimate hull girder strength, it is necessary to account the influences of the localization of yielding and deformation after the ultimate strength has been reached.

The next point, which should be noticed, is the relationships between initial yielding strength and calculated hull girder ultimate strength. Even though, there are some exceptional cases, it can be said that, under sagging case, the initial yielding strength shows relatively good correlation with the hull girder ultimate and in general gives a little lower estimation value. On the other hand, under the hogging case, the initial yielding strength is sometimes higher than the fully plastic bending moment. This is the case when neutral axis of the cross section is located at lower part of the cross-section and stress based on elastic moment of inertia near the deck is higher than yield stress. For this fictitious stress distribution is, M_{YH} is higher than M_p . In this case, the initial buckling strength, M_{BH} , gives a better estimate of the hull girder ultimate strength than M_{YH} in general on the conservative side.

6 COLLAPSE ANALYSES UNDER COUPLED BENDING

Ships have some particular behavioral problems subject to coupled vertical and horizontal bending moment due to interactions of their particular geometry. The maximum stresses are normally taken place at the conjunction between the deck and side under coupled moment. This is mainly because, the ultimate strength of stiffened plate the slenderness ratios are different from each others; thus different maximum axial carrying capacity is expected to occur. The ultimate carrying capacity of side structure is usually lower than that of the deck. As a result, the impact on the vertical and horizontal moment of these stresses – strain distributions near collapse is different since the side strength is more important for the horizontal bending while the deck strength is more important for the sagging moment.

The angle of the resultant bending moment vector and the angle of the curvature vector is changing during the load process. If the direction of one of them is kept constant, the minimum carrying capacity

of the section to sustain the bending moment is obtained at angles near but not equal to the horizontal bending.

The hull girder ultimate strength of bulk carrier vessel is analyzed under combined vertical and horizontal bending moments. Interaction curves are obtained from a series of calculation for the hull bending with different angles of the curvature vector from hogging of vertical bending (the angle of the curvature vector $\theta = 0$ degree) through horizontal bending ($\theta = 90$ degree) to sagging of the vertical bending ($\theta = 180$ degree).

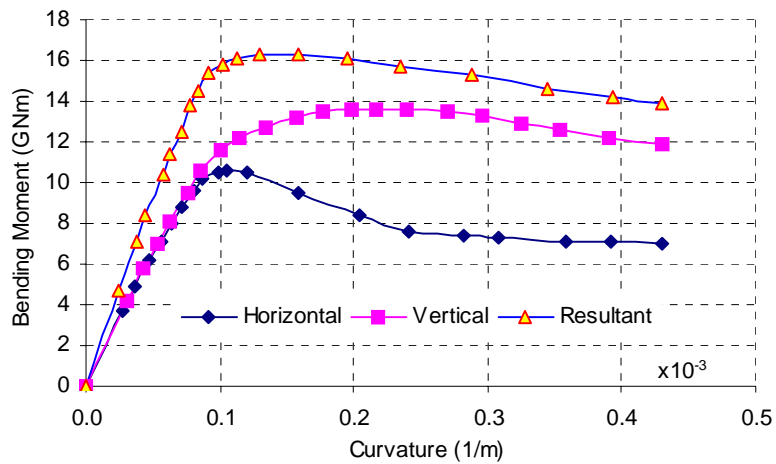


Figure 5 Components of bending moment at $\theta = 20$ degree in hogging condition

In Figure 5 the results of bulk carrier are presented in the form of bending moment versus curvature diagram in terms of resultant, vertical and horizontal components. In the present case at an angle of curvature vector $\theta = 20$ degree, a collapse of the section is evident in horizontal bending moment at a curvature of 0.106×10^{-3} 1/m, while vertical bending moment has its maximum value at a curvature of 0.201×10^{-3} 1/m. This is because, the side panels near the bilge collapse first and this collapse is more important for the horizontal than for the vertical modulus due to the greater reduction in effective inertia moment about the vertical than about the horizontal axis.

The collapse under the simultaneous action of vertical and horizontal bending moments has been calculated for the different combinations as reflected in the angle between the neutral axis and the horizontal axis.

A series of diagrams is presented in Figure 6 to illustrate the behavior and the ultimate capacity of the analyzed bulk carrier vessels' in the case of combined bending moment with respect to analyze of curvature vector. It can be seen that the horizontal component is equal to zero in case of the vertical bending as the cross section is symmetrical with respect to the vertical axis. Due to lack of symmetry with respect to the horizontal axis, a non-zero value of the vertical component appears.

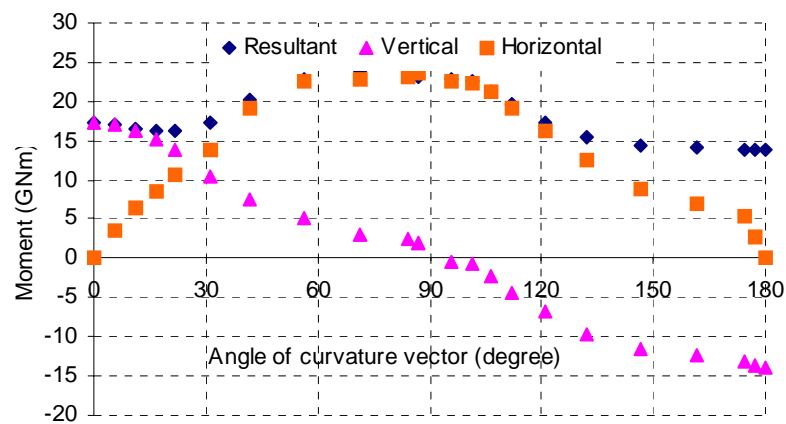


Figure 6 The magnitude of the moment components with respect to angle of curvature vector

The relationship between the angles of the curvature vector and the angle of the resultant bending moment vector for the present bulk carrier vessels is plotted in Figure 7. It is seen that it is different in general cases. The reason for the asymmetry of the curves is that the hull cross-section of the bulk carrier is not symmetrical about horizontal axis and the behavior of the structural members under compression is different from that under tension due to the nonlinearity caused by buckling. Therefore, the angle of the curvature vector and the angle of the resultant bending moment vector are not same in general cases.

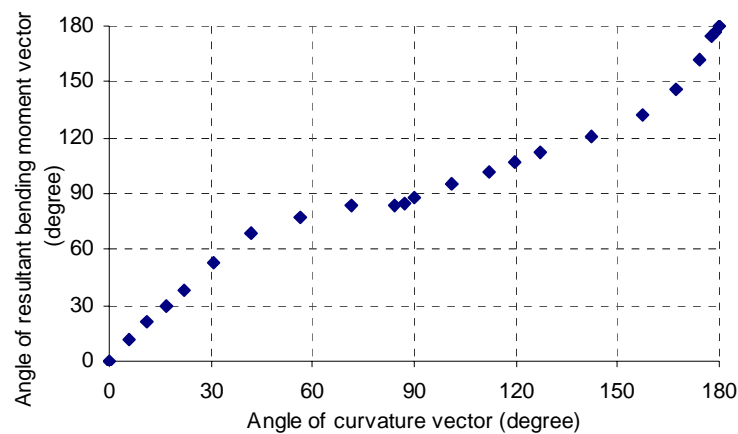


Figure 7 Relationship between angle of resultant bending moment and angle of curvature vector

For single skin bulk carrier vessel investigated in this study the following characteristics can be drawn through this investigation.

- When the hull is under horizontal bending, that is, the angle of the curvature vector is $\theta = 90$ degree, the angle of resultant bending moment vector, φ , is not equal to 90 degree due to effect of non-linearity. When $\theta = 90$ degree, there exist both horizontal and vertical bending moments on the hull cross-section. For the present bulk carrier, when $\theta = 90$ degree, the horizontal bending moment is 22.931 GNm and vertical bending moment is 2.072 GNm. The angle of the resultant bending moment is $\varphi = 87.65$ degree.
- If the hull girder is subjected only to horizontal bending moment, that is, the angle of the resultant bending moment vector is $\varphi = 90$ degree, then the angle of the curvature vector is

not necessarily equal to 90 degree. The angle of the curvature vector is $\theta = 95.08$ degree when $\varphi = 90$ degree for the investigated bulk carrier vessel.

- The maximum value of the horizontal bending moment occurs neither at $\theta = 90$ degree nor at $\varphi = 90$ degree. For Bulk Carrier, the maximum value of the horizontal bending moment takes place at $\theta = 71.58$ degree and $\varphi = 83.18$ degree. The maximum value of the horizontal bending moment is 23.56 GNm. At the moment the horizontal bending moment reaches its maximum, there exists a vertical bending moment on the hull cross-section, which is 2.823 GNm.

For the ultimate strength interaction relationship between vertical and horizontal bending moments, the following simple expression was proposed by Paik et al., (1996), regardless of initial imperfection level.

$$\left(\frac{M_x}{M_{xu}}\right)^{1.85} + \left(\frac{M_y}{M_{yu}}\right) = 1 \quad (23)$$

Where, M_x is vertical bending moment, M_{xu} is vertical ultimate bending moment, M_y is horizontal bending moment and M_{yu} is horizontal ultimate bending moment.

Another interaction equation was proposed by Gordo and Soares, (1997) based on the results for five tankers and six container ships, which is,

$$\left(\frac{M_x}{M_{xu}}\right)^a + \left(\frac{M_y}{M_{yu}}\right)^a = 1 \quad 1.50 < a < 1.66 \quad (24)$$

Even though interaction equations proposed by Gordo & Soares were not applied to bulk carriers, even so they have been used in this study.

Ozguc et al., (2005b) also proposes interaction formulas for hogging and sagging cases separately and is presented as follows,

$$\left(\frac{M_x}{M_{xu}}\right)^2 + \left(\frac{M_y}{M_{yu}}\right)^a = 1 \quad (25)$$

Where, $a = 1.40$ for hogging case and $a = 1.10$ for sagging case are proposed for bulk carrier vessels.

Mansour et al., (1995) have proposed an empirical interaction equation based on the calculated results for one container ship, one tanker, and one cruiser, which is

$$\begin{aligned} \left(\frac{M_x}{M_{xu}}\right) + 0.8\left(\frac{M_y}{M_{yu}}\right)^2 &= 1, & \left|\frac{M_x}{M_{xu}}\right| > \left|\frac{M_y}{M_{yu}}\right| \\ \left(\frac{M_y}{M_{yu}}\right) + 0.8\left(\frac{M_x}{M_{xu}}\right)^2 &= 1, & \left|\frac{M_x}{M_{xu}}\right| < \left|\frac{M_y}{M_{yu}}\right| \end{aligned} \quad (26)$$

The interactions between vertical and horizontal moments are illustrated in Figure 8 and Figure 9. It is seen that the ultimate vertical sagging moment is normally different than the ultimate vertical hogging moment when the ship is subjected to couple horizontal and vertical moment.

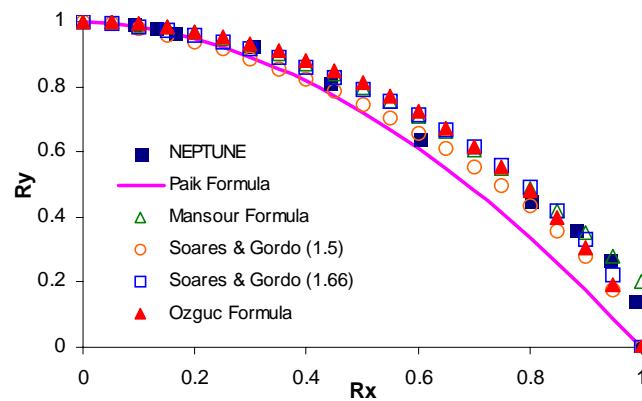


Figure 8 Interaction curves for bulk carrier under coupled bending moment for hogging condition, R_x and R_y indicate non-dimensional vertical and horizontal bending moments' ratio

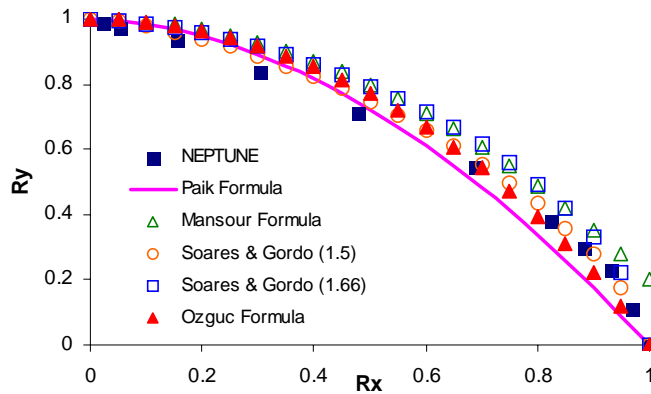


Figure 9 Interaction curves for bulk carrier under coupled bending moment for sagging condition

7 CONCLUSIONS

The simplified method based on the discrete hull cross-section model is a simple and effective method to estimate the ultimate longitudinal strength of ship hulls. A 180000 DWT capacity single side skin bulk carrier is analyzed by using a simplified method in this paper. Vertical bending moment is examined by seven different methods. The moment versus curvature curves and the values of the ultimate longitudinal moments at collapse states are determined for both hogging and sagging cases. Some scatters were observed among calculated results applying different methods. On the other hand, it was shown that a simplified method predicts the ultimate strength very accurately if the assumed collapse mode is the same as the actual one. The most crucial point for a simplified method is that it is able to simulate the occurrence of overall buckling as a stiffened plate including tripping of longitudinal stiffeners.

The primary aim of the this research study was to investigate the characteristics of the ultimate strength for bulk carrier ship design and to compare simple strength interaction relationships proposed by researchers for hogging and sagging cases between the two load components that normally act on it, namely vertical and horizontal bending moment.

It was shown that the ultimate hull strength interaction formulas used in this paper provided reasonably accurate fits to actual NEPTUNE output. Therefore, the results presented can be extremely useful for the trend analysis in ship design or in the reliability analysis of hull girder collapse.

The evaluation of the ultimate strength using NEPTUNE is believed to be an adequate estimation of the ultimate load capacity of the ship. Further refinement using non-linear FE analysis requires considerably more engineering and computational effort and is not expected to yield substantially different results

8 ACKNOWLEDGEMENTS

The views expressed in this paper are those of the authors and are not necessarily those of the institution with which the authors are affiliated

9 REFERENCES

Gordo, J.M., and Guedes Soares, C. (1996). Approximate methods to evaluate the hull girder collapse strength, *Marine Structures*, 9(3), 449-470.

Gordo, J.M. and Guedes Soares, C. (1997) Interaction equation for the collapse of tankers and containership under combined bending moments, *Journal of Ship Research*, 41: 230-240.

Hu, Y., Zhang, A. and Sun, J. (2001). Analysis on the ultimate longitudinal strength of a bulk carrier by using a simplified method, *Marine Structures*, 14: 311-330.

Mansour, A.E., Lin, Y.H. and Paik, J.K. (1995). Ultimate strength of ships under combined vertical and horizontal moments, *Proceedings of 6th International Symposium on Practical Design of Ships and Mobile Units PRADS'95*, Seoul.

Ozguc, O., Das, P.K. and Barltrop, N.D.P. (2006a). A comparative study on the structural integrity of single and double side skin bulk carriers under collision damage, *Marine Structures*, 18: 511-549.

Ozguc, O., Das, P.K. and Barltrop, N.D.P. (2007a). Rational interaction design equations for the ultimate longitudinal strength of tankers, bulk carriers, general cargo and container ships under coupled bending moment, *Journal of Ship Research*. (Accepted for publication)

Ozguç, O., Das, P.K. and Barltrop, N.D.P. (2006b). A proposed method to evaluate hull girder ultimate strength. *Journal of Ships & Offshore Structures*, 1(4):335-346.

Ozguç, O., Das, P.K. and Barltrop, N.D.P. (2007b). The new simple design equations for the ultimate compressive strength of imperfect stiffened plates, *Ocean Engineering*. (In press)

Ozguç, O., Das, P.K. and Barltrop, N.D.P. (2005a). Simplified closed-form interaction formulations for evaluation of structural response of stiffened plates, *International Shipbuilding Progress*. (Submitted to publication)

Ozguç, O., Samuelides, M. and Das, P.K. (2005b). A comparative study on the collision resistance of single and double side skin bulk carriers, *International Congress of International Maritime Association of the Mediterranean (IMAM)*, 26-30 September, Lisbon, Portugal.

Paik, J.K., Thayamballi, A.K. and Jung, S.C. (1996). Ultimate strength of ship hulls under combined vertical bending, horizontal bending, and shearing forces, *Trans.SNAME*, 104: 31-59.

Rizzuto, E. (1997) Discussion of Committee II.1 Report of ISSC'1997, *Proceedings of 13th ISSC*, T.Moan and S.Berge (eds), Pergamon Press – Elsevier Science, 13: 69-71.

Smith, C.S. (1977). Influence of local compressive failure on ultimate longitudinal strength of a ship's hull, *Proc. Int. Symp. On Practical Design in Shipbuilding*, Tokyo, Japan, 73-79.

Yao, T. et al (2000). Ultimate hull girder strength, *Proceedings of the 14th International Ship and Offshore Structures Congress (ISSC)*, Nagasaki, Japan, 321-391.

Yao, T., Fujikubo, M., Kondo, K. and Nagahama, S. (1994). Progressive collapse behavior of double hull tanker under longitudinal bending, *4th ISOPE Conference*. Osaka, Japan.